

THIS MAP WAS PREPARED FOR ASSESSMENT PURPOSE ONLY.

Upper Left:
123°24'46"W 42°44'10"N
4138894E 403400N ft

SE1/4 NE1/4 SEC.04 T.33S. R.06W. W.M.
DOUGLAS COUNTY
1" = 100'

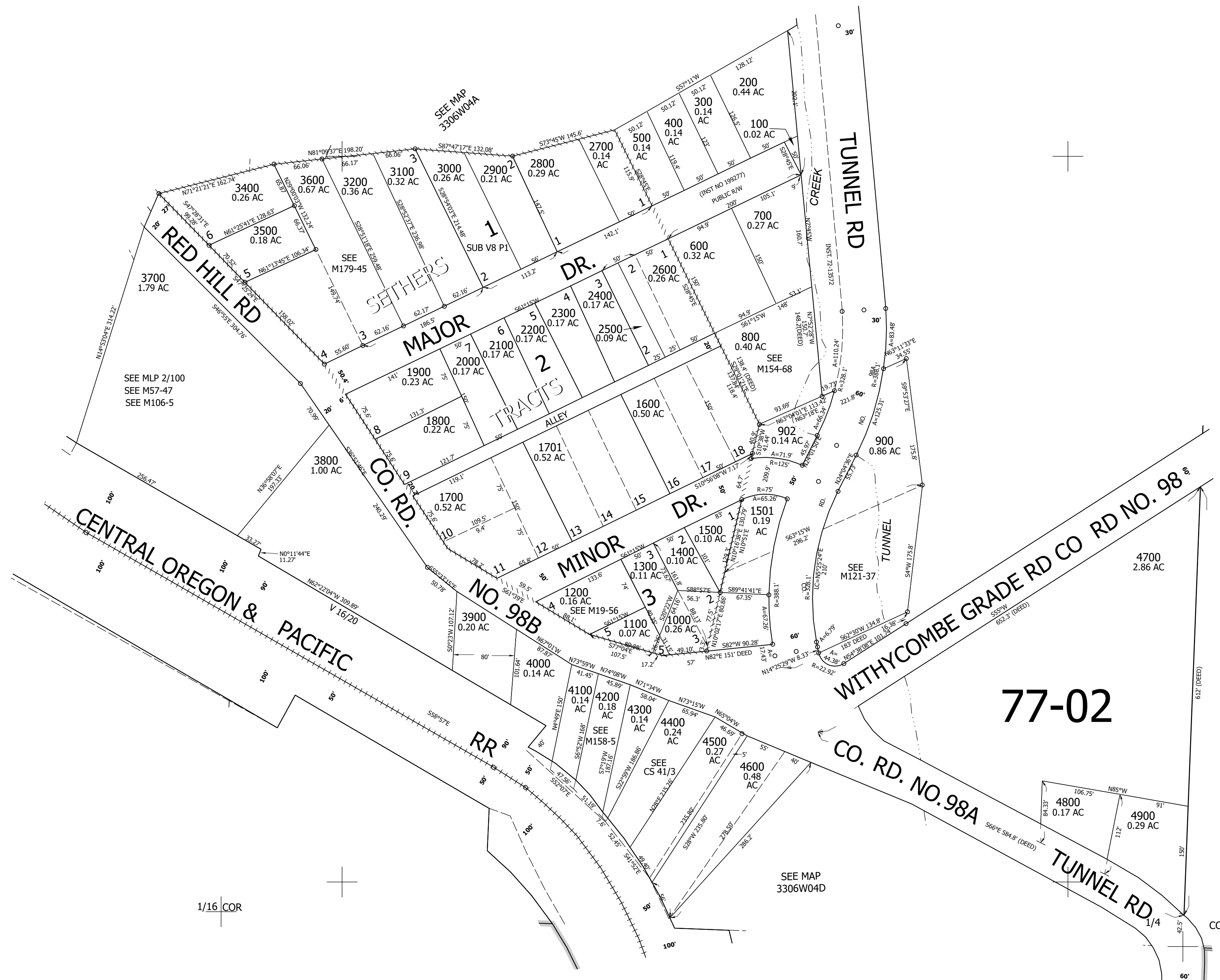
Date Expired: 4/17/2023 4:09 PM

330604AD
&

CANCELLED NOS:
3200A1 901 903
3300 904

1/16 COR

1/16 COR



1/16 COR

COR

SEE MAP
3306W03

SEE MAP
3306W04D

Lower Right:
123°24'19"W 42°43'54"N
4140856E 401661N ft

330604AD
&