

THIS MAP WAS PREPARED FOR ASSESSMENT PURPOSE ONLY.

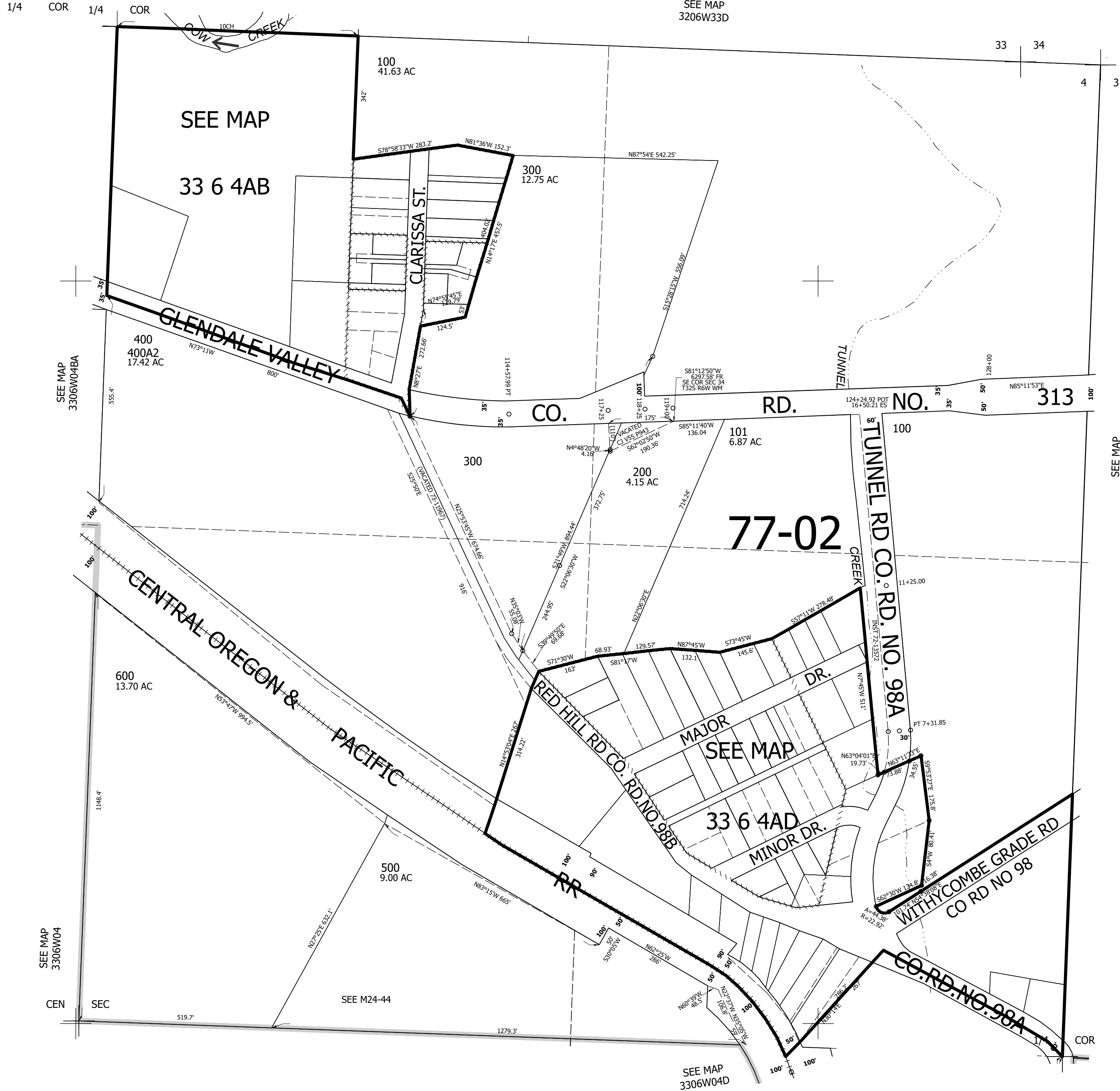
Upper Left:
123°25'7"W 42°44'26"N
4137422E 405025N ft

NE1/4 SEC.04 T.33S. R.06W. W.M.
DOUGLAS COUNTY
1" = 200'

Date Exported 2025-04-01

330604A
& INDEX

CANCELLED NOS:
700 700MI 400A1



SEE MAP
3306W03

SEE MAP
3306W04BA

SEE MAP
3306W04

SEE MAP
3306W04D

330604A
& INDEX

Lower Right:
123°24'13"W 42°43'53"N
4141347E 401548N ft