

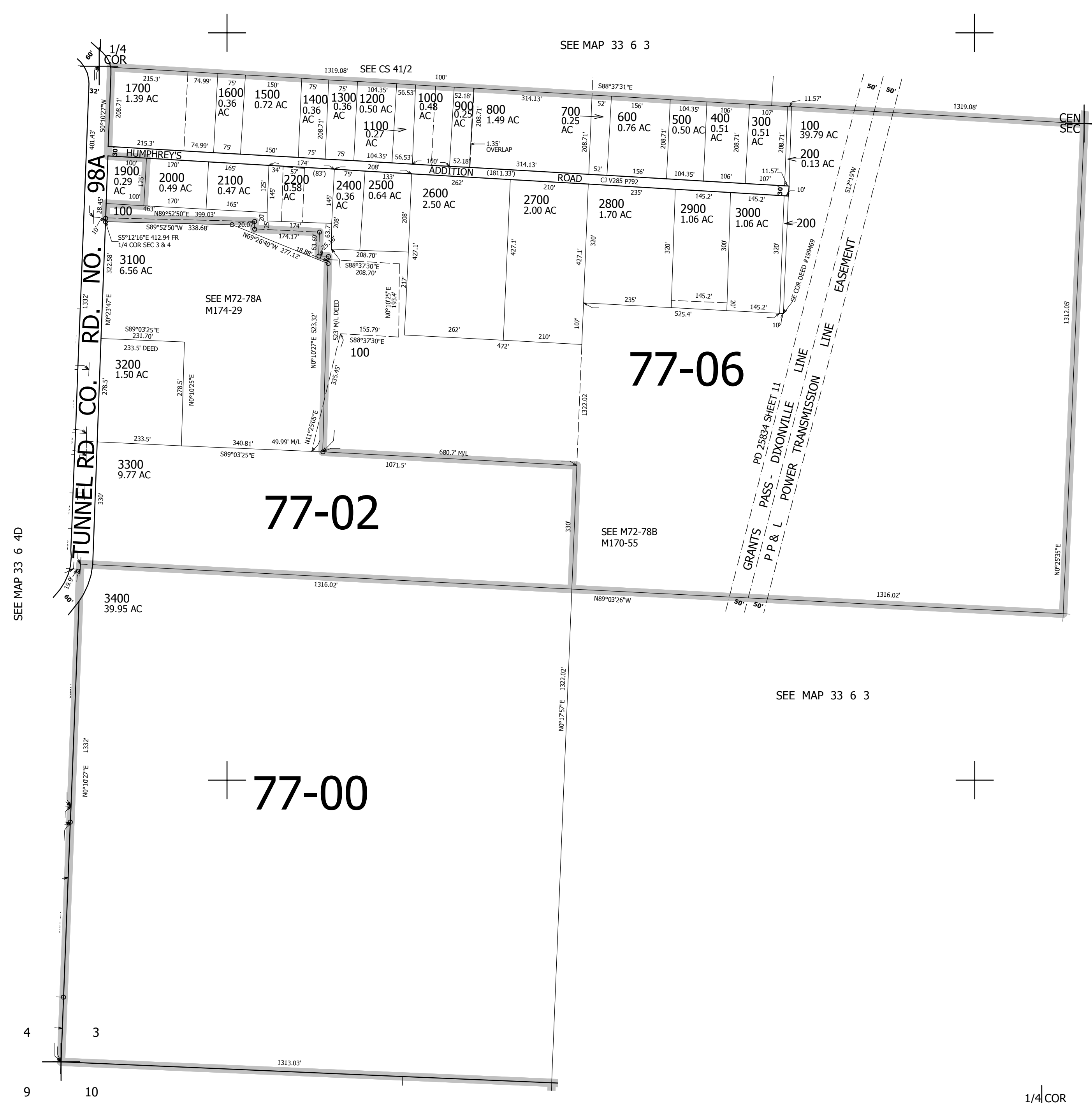
THIS MAP WAS PREPARED FOR ASSESSMENT PURPOSE ONLY.

SW1/4 SEC.3 T33S. R.6W. W.M.
DOUGLAS COUNTY
1" = 200'

REVISED ON
6-2-2020

33 6 3C

SEE MAP 33 6 3



CANCELLED NO'S
2300 3199 3101
1800

SEE MAP 33 6 4D

SEE MAP 33 6 3

SEE MAP 33 6 3

400,000

4

3

9

10

SEE MAP 33 6 10

1/4 COR

4,143,000

33 6 3C