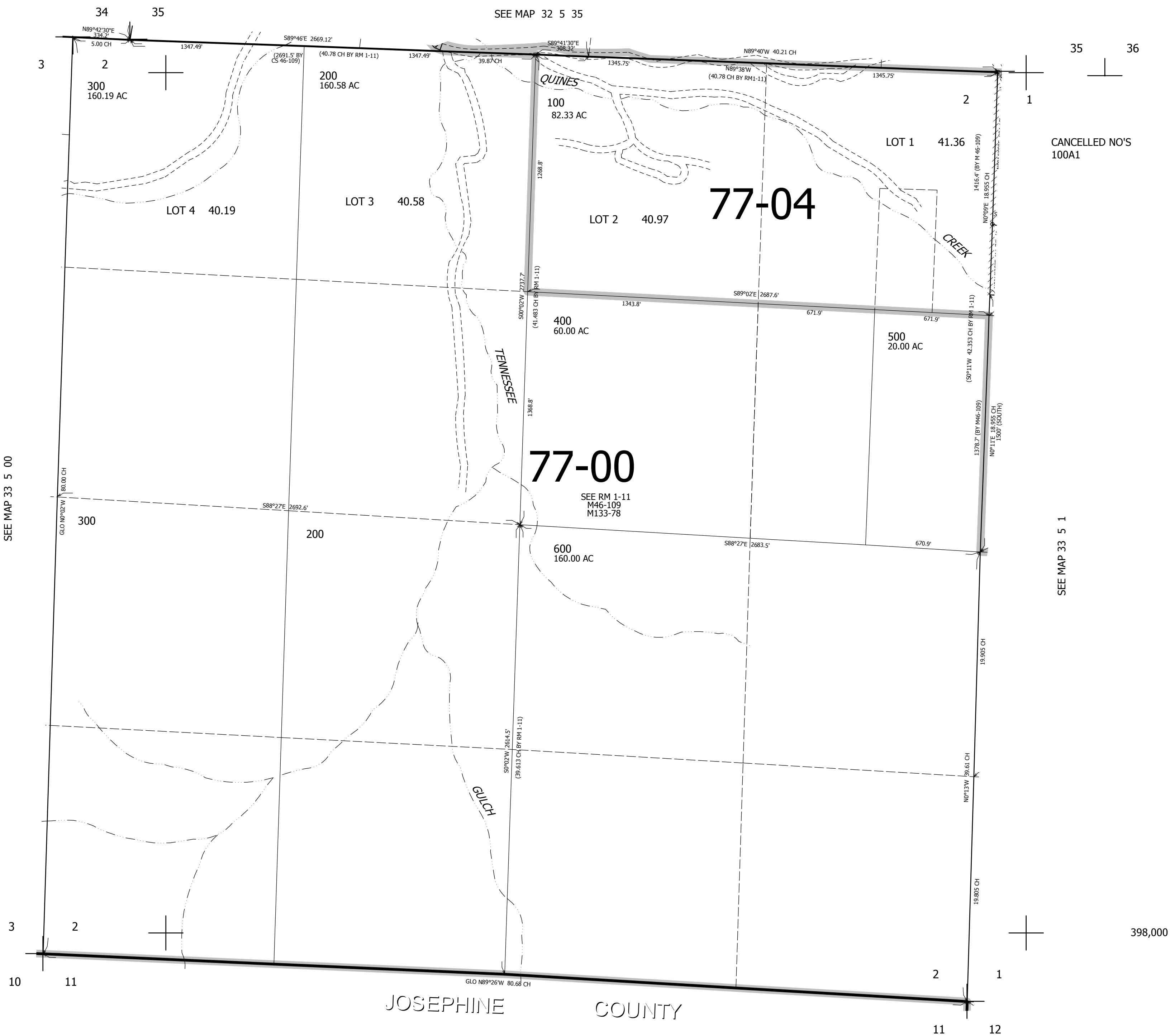


THIS MAP WAS PREPARED FOR ASSESSMENT PURPOSE ONLY.

SEC.2 T33S. R.5W. W.M.
DOUGLAS COUNTY
1" = 400'

REVISED ON
7-2-12

33 5 2



CANCELLED NO'S
100A1

SEE MAP 33 5 1

SEE MAP 33 5 00

SEE MAP 32 5 35

398,000

4,183,000

33 5 2

JOSEPHINE COUNTY