

THIS MAP WAS PREPARED FOR ASSESSMENT PURPOSE ONLY.

T33S. R.5W. W.M.
DOUGLAS COUNTY
1" = 2000'

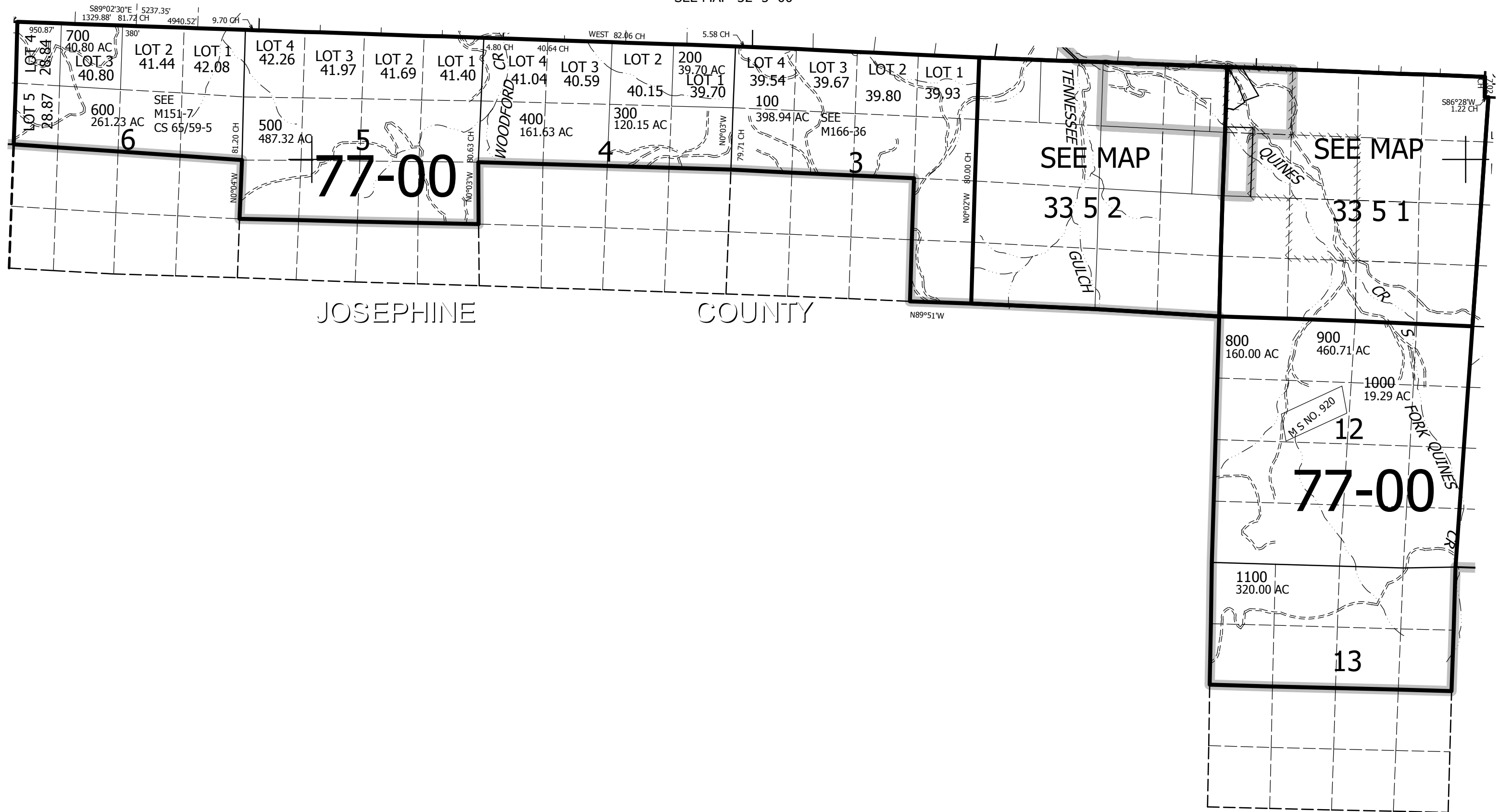
REVISED ON
10-4-10

33 5 00
& INDEX

CANCELLED
300M1 300M2 600M1
800M1

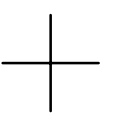
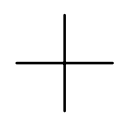
SEE MAP 32 5 00

SEE MAP 33 6 00



SEE MAP 33 4 00

JACKSON COUNTY



376,000

4,188,000
33 5 00
& INDEX