

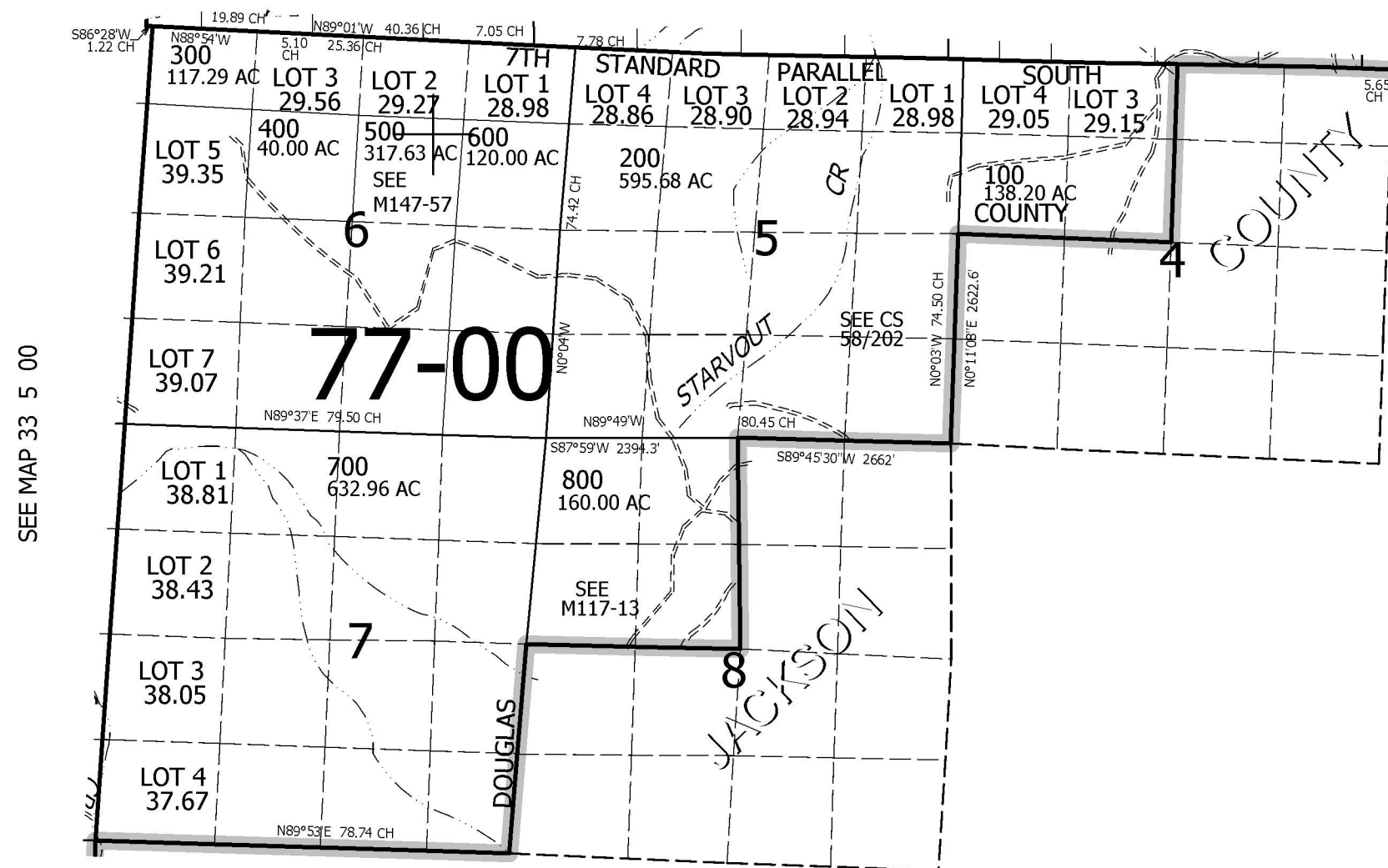
THIS MAP WAS PREPARED FOR ASSESSMENT PURPOSE ONLY.

T33S. R.4W. W.M.
DOUGLAS COUNTY
1" = 2000'

REVISED ON
9-30-10

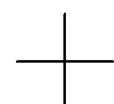
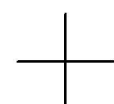
33 4 00

SEE MAP 32 4 00



SEE MAP 33 5 00

CANCELLED
100M1 300M1 500M1
600M1 800M1



376,000

4,217,000

33 4 00