

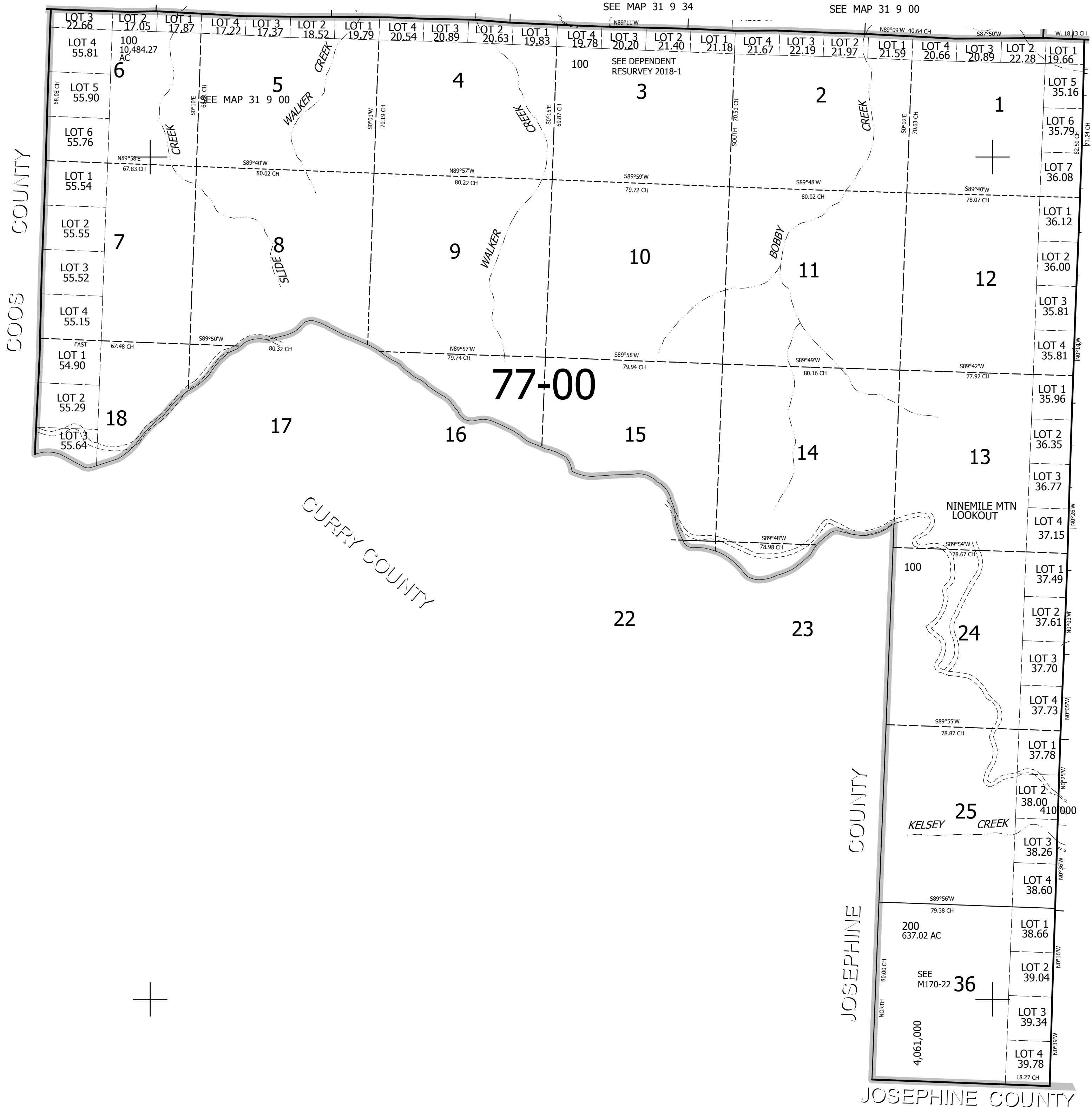
THIS MAP WAS PREPARED FOR ASSESSMENT PURPOSE ONLY.

# T.32S. R.9W. W.M. DOUGLAS COUNTY

REVISED ON

32 9 00

1" = 2000'



CANCELLED NO'S

SEE MAP 32 8 00

JOSEPHINE COUNTY

32 9 00