

THIS MAP WAS PREPARED FOR ASSESSMENT PURPOSE ONLY.

T.32S. R.8W. W.M. DOUGLAS COUNTY

REVISED ON 10-21-16

32 8 00

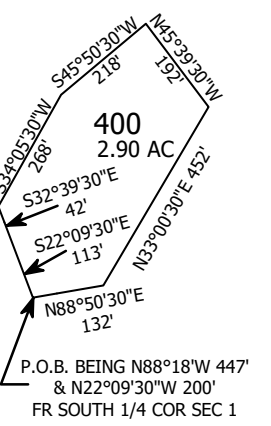
1" = 2000'

SEE MAP 31 8 00

SEE MAP 32 9 00

CANCELLED NO'S
 300M1 500M1 700M1
 1000M1 1100M1 1300M1
 1500M1 1700M1 2100M1
 2400M1 2600M1 2800M1
 3000M1 3200M1 3300M1
 3500M1 3800M1 4000M1
 4200M1 4300M1 4700M1
 4900M1 5000M1 5200M1
 5300M1 5500M1 5600M1
 5800M1 5900M1 6000M1
 6300M1 6400M1 6600M1
 6700M1 6900M1 7000
 7000M1

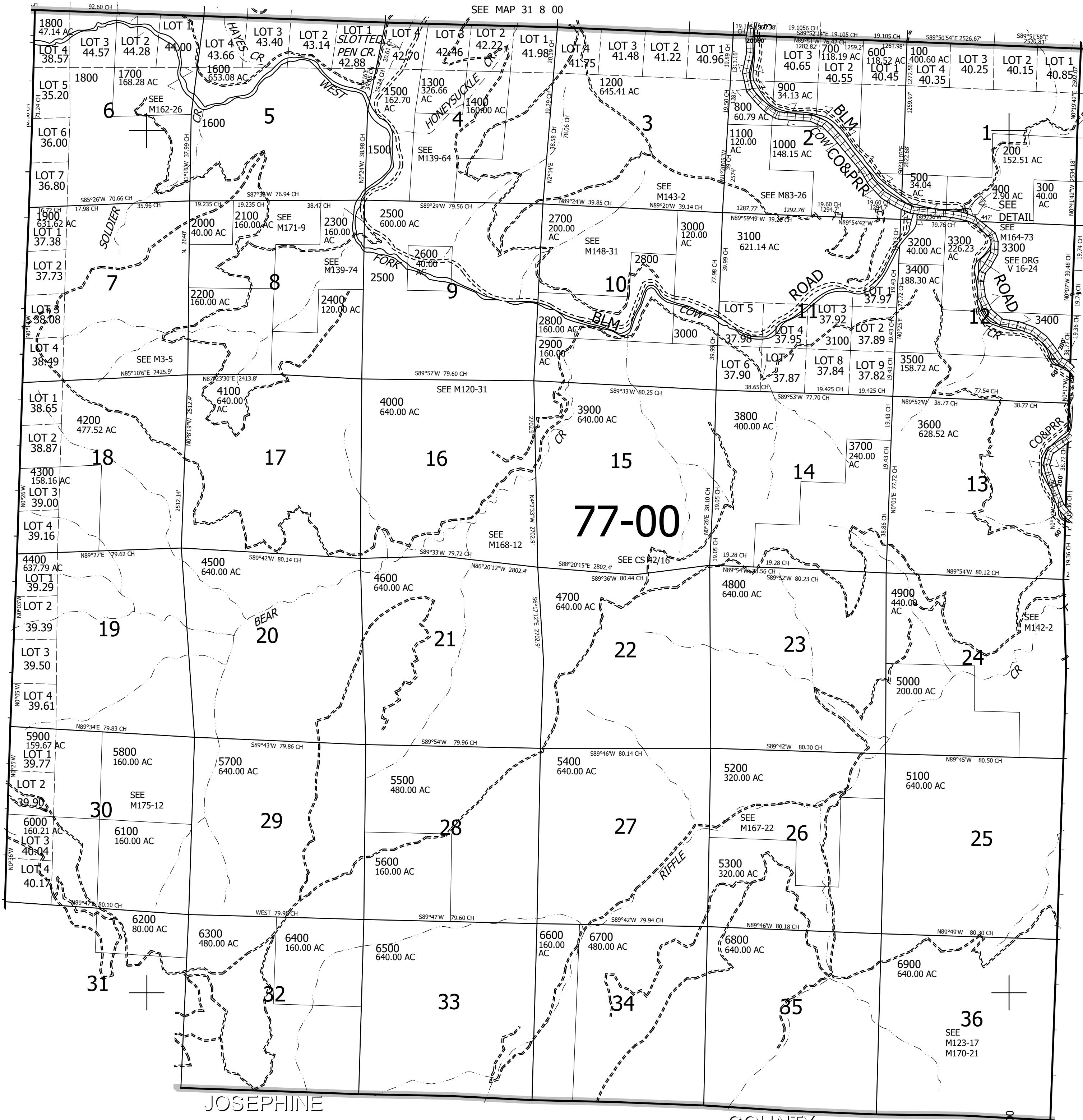
PARCEL 400
DETAIL 1" = 400'



SEE MAP 32 7 00

410,000

32 8 00



JOSEPHINE COUNTY

4,091,000