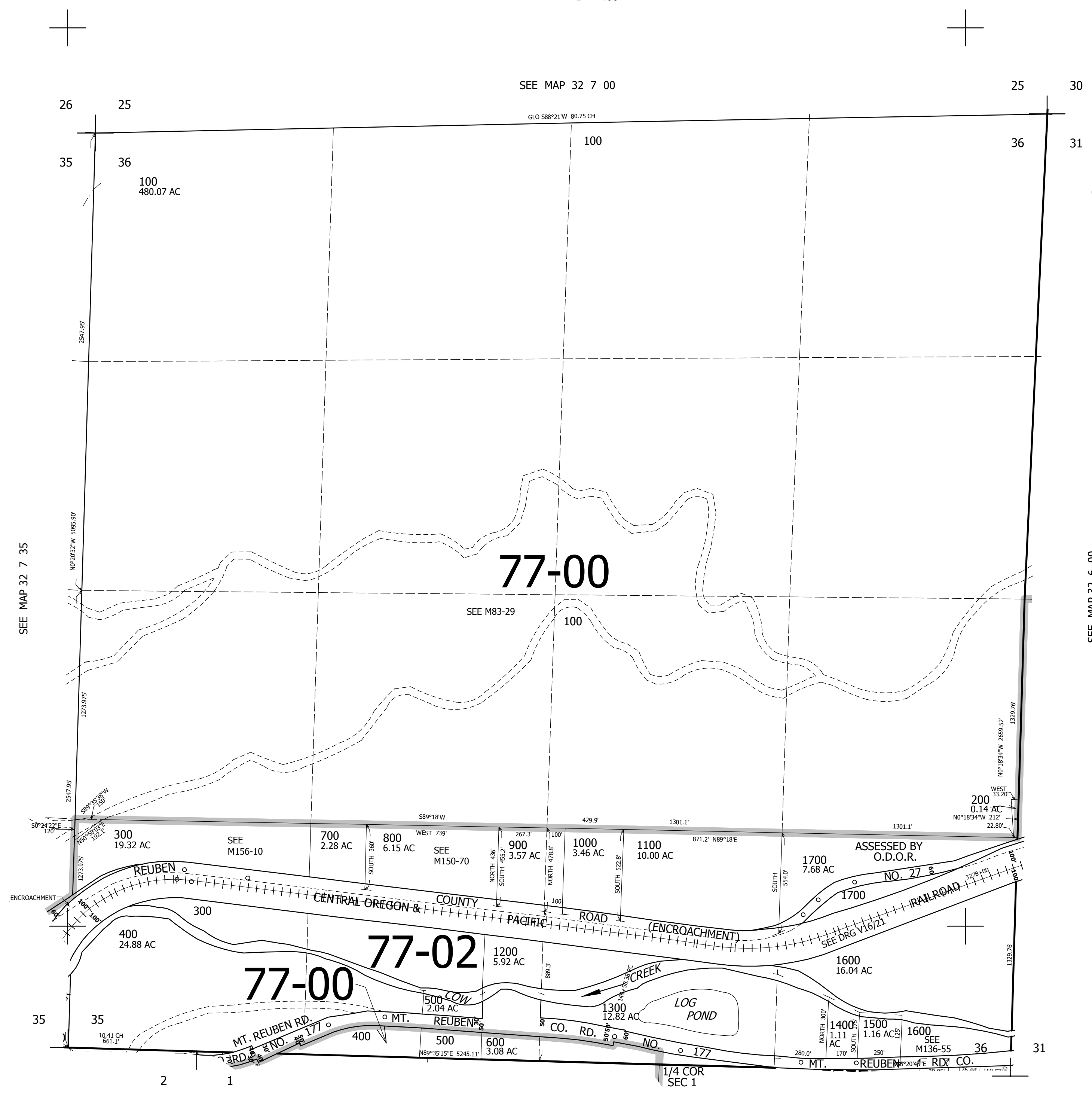


THIS MAP WAS PREPARED FOR ASSESSMENT PURPOSE ONLY.

SEC.36 T.32S. R.7W. W.M.
DOUGLAS COUNTY
1" = 400'

REVISED ON
10-21-16

32 7 36



CANCELLED NO'S
100M1 1700M1

406,000

4,124,000

32 7 36