

THIS MAP WAS PREPARED FOR ASSESSMENT PURPOSE ONLY.

SEC.36 T.32S. R.6W. W.M.
DOUGLAS COUNTY

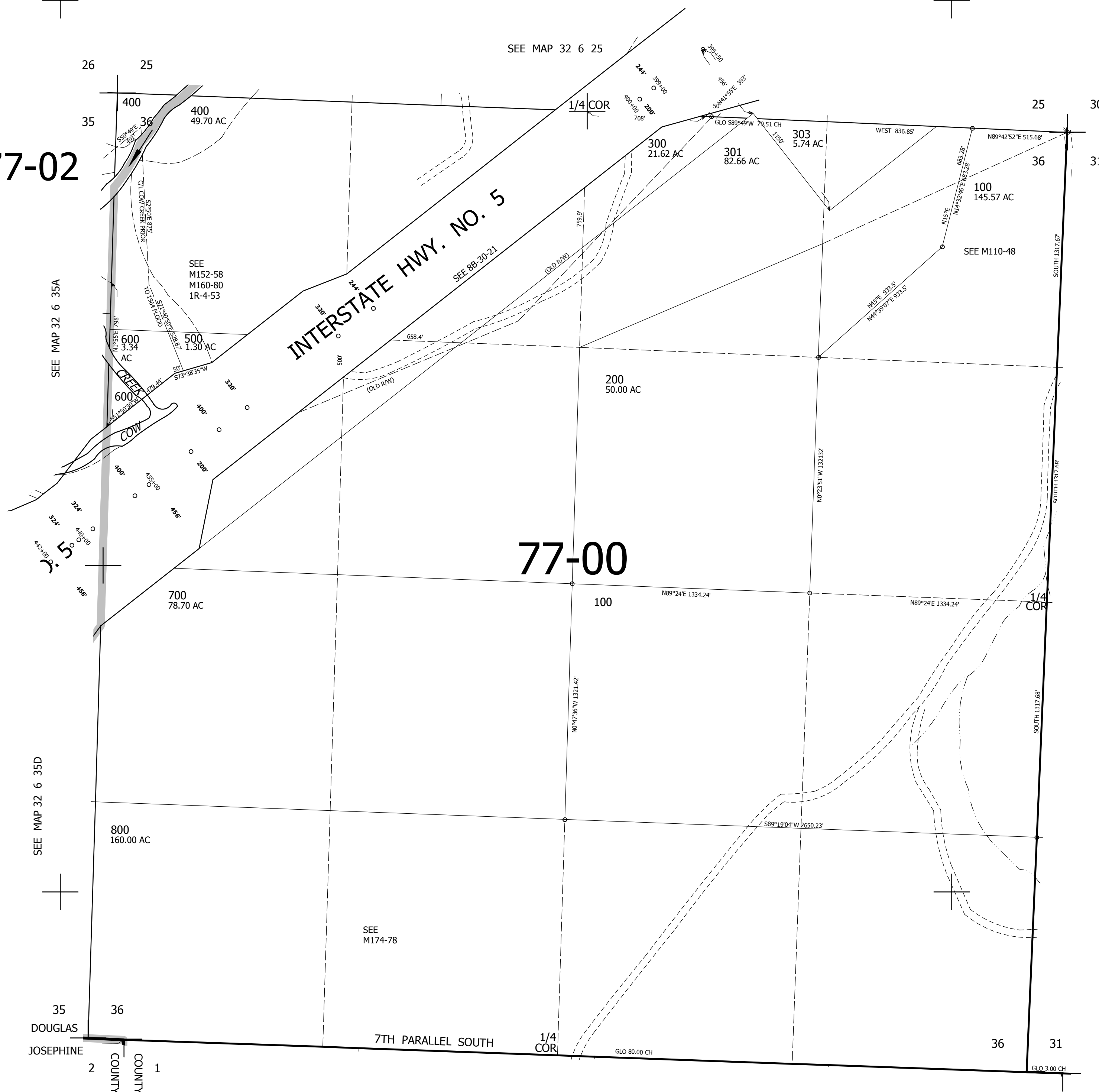
REVISED ON
8-12-20

32 6 36

1" = 400'

77-02

77-00



CANCELLED NO'S
302 301M1 800M1

SEE MAP 32 5 31

405,000

SEE MAP 32 6 35D

SEE MAP 32 6 35A

SEE MAP 33 6 00

4,156,000

35
DOUGLAS
JOSEPHINE

2
COUNTY
1

7TH PARALLEL SOUTH

1/4
COR

36

31

GLO 3.00 CH

1

6

32 6 36