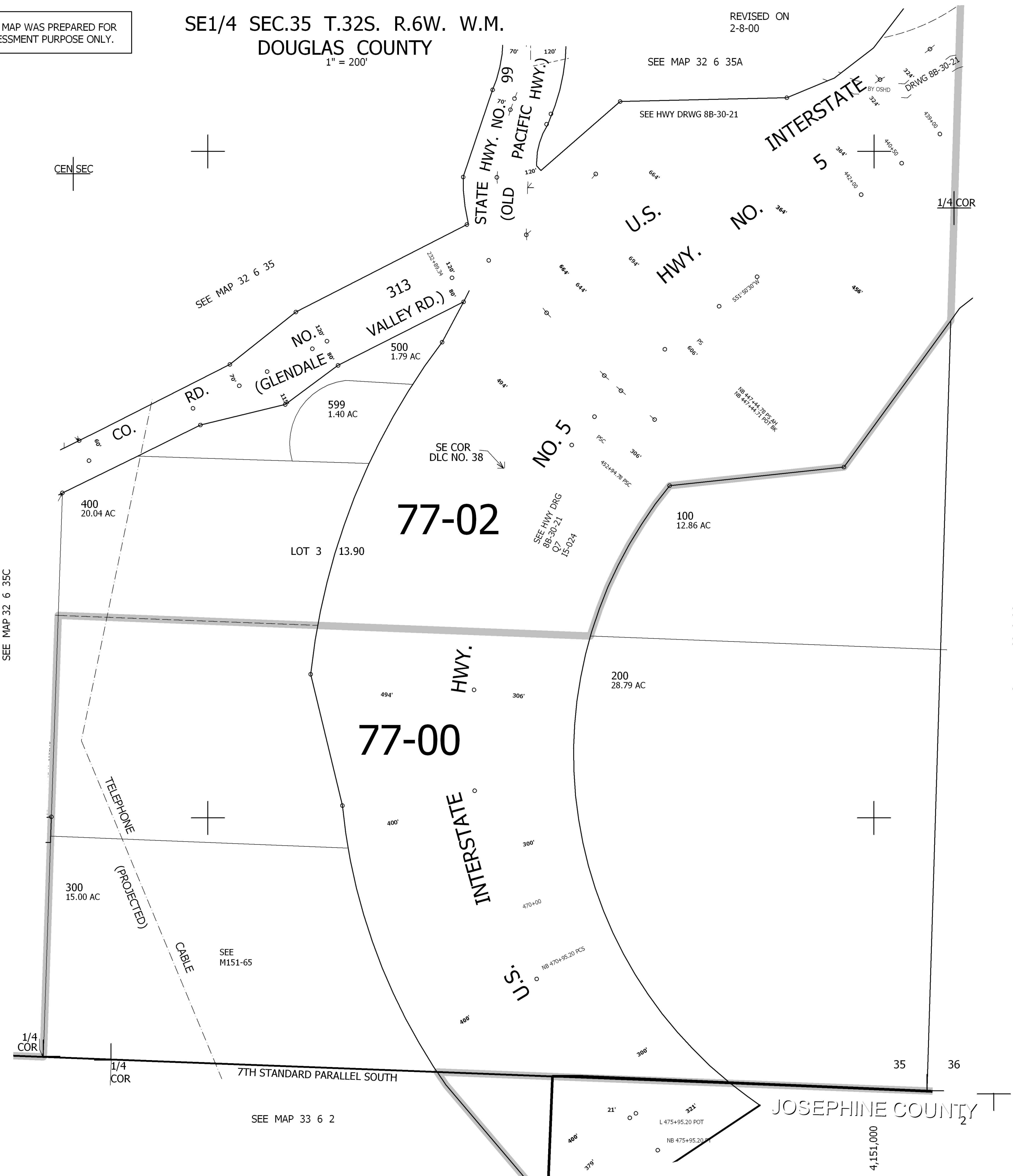


THIS MAP WAS PREPARED FOR ASSESSMENT PURPOSE ONLY.

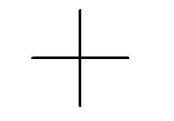
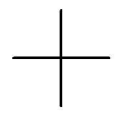
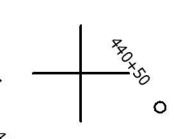
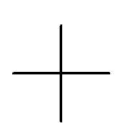
SE1/4 SEC.35 T.32S. R.6W. W.M.  
DOUGLAS COUNTY  
1" = 200'

REVISED ON  
2-8-00

32 6 35D



CEN SEC



SEE MAP 32 6 35C

SEE MAP 32 6 36

SEE MAP 32 6 35

SEE MAP 32 6 35A

SEE HWY DRWG 8B-30-21

SE COR  
DLC NO. 38

SEE HWY DRG  
8B-30-21  
Q7  
15-024

SEE  
M151-65

SEE MAP 33 6 2

CANCELLED NO'S

405,000

JOSEPHINE COUNTY

1

32 6 35D

4,151,000