

THIS MAP WAS PREPARED FOR ASSESSMENT PURPOSE ONLY.

SW1/4 SEC.35 T.32S. R.6W. W.M.
DOUGLAS COUNTY

REVISED ON
12-17-15

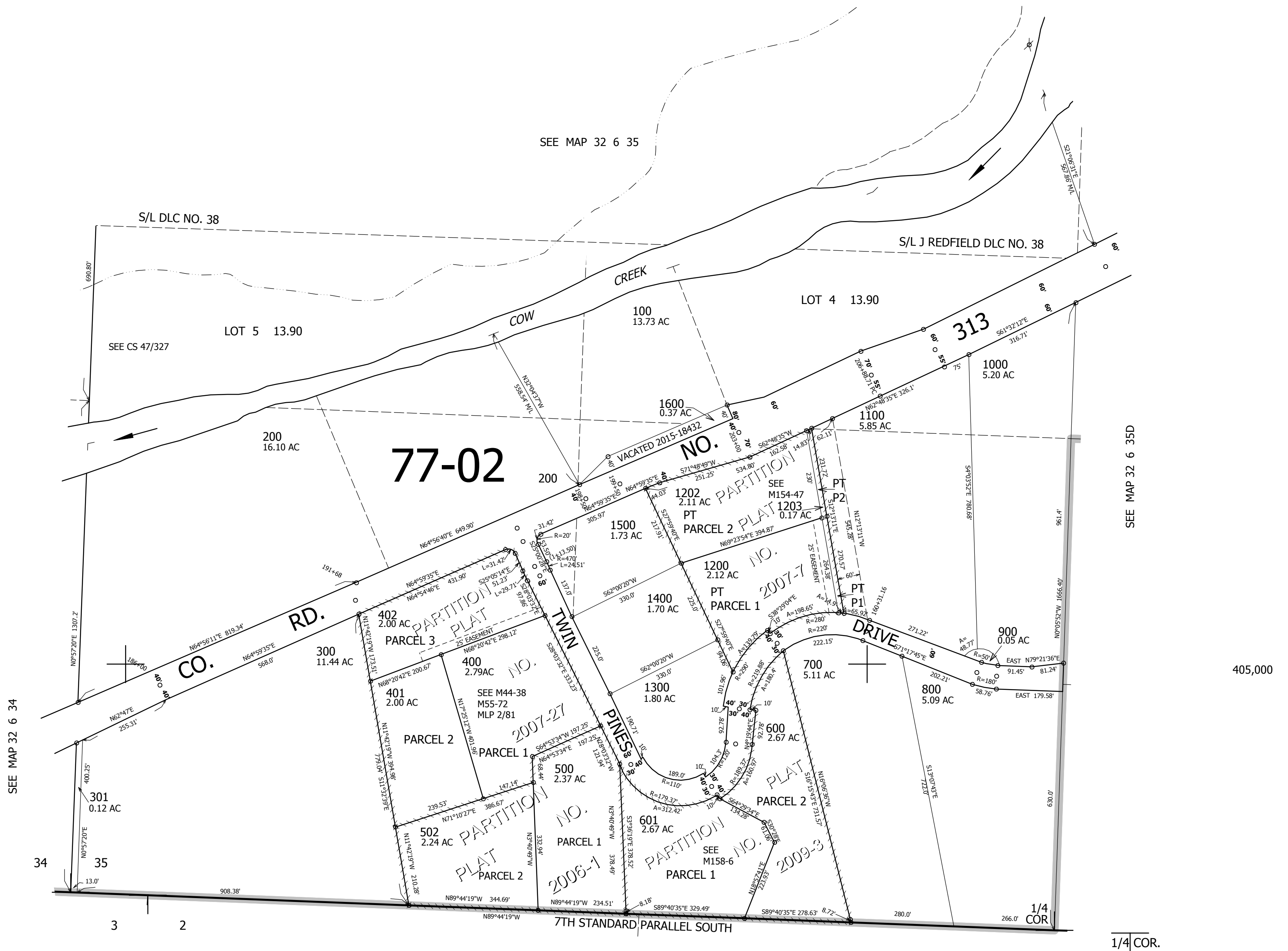
32 6 35C

1" = 200'

1/4 COR.

CEN. SEC.

CANCELLED NO'S
1201 501 1204



SEE MAP 32 6 34

SEE MAP 32 6 35D

405,000

SEE MAP 33 6 2

4,148,000

32 6 35C