

THIS MAP WAS PREPARED FOR ASSESSMENT PURPOSE ONLY.

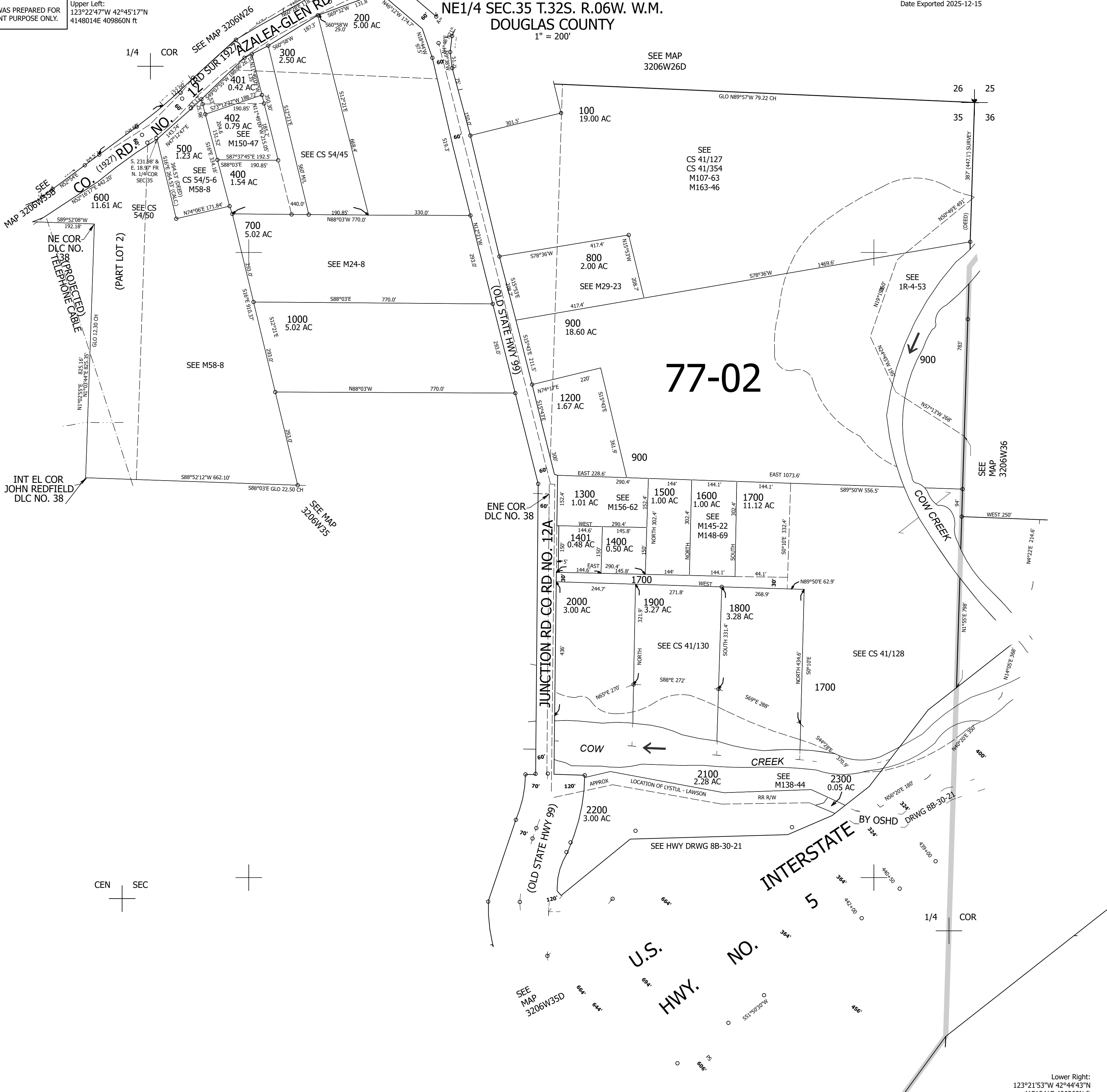
Upper Left:
123°22'47"W 42°45'17"N
4148014E 409860N ft

NE1/4 SEC.35 T.32S. R.06W. W.M.
DOUGLAS COUNTY
1" = 200'

Date Exported 2025-12-15

320635A

CANCELLED NOS:
403 404 1100



320635A

Lower Right:
123°21'53"W 42°44'43"N
4151941E 406260N ft