

THIS MAP WAS PREPARED FOR ASSESSMENT PURPOSE ONLY.

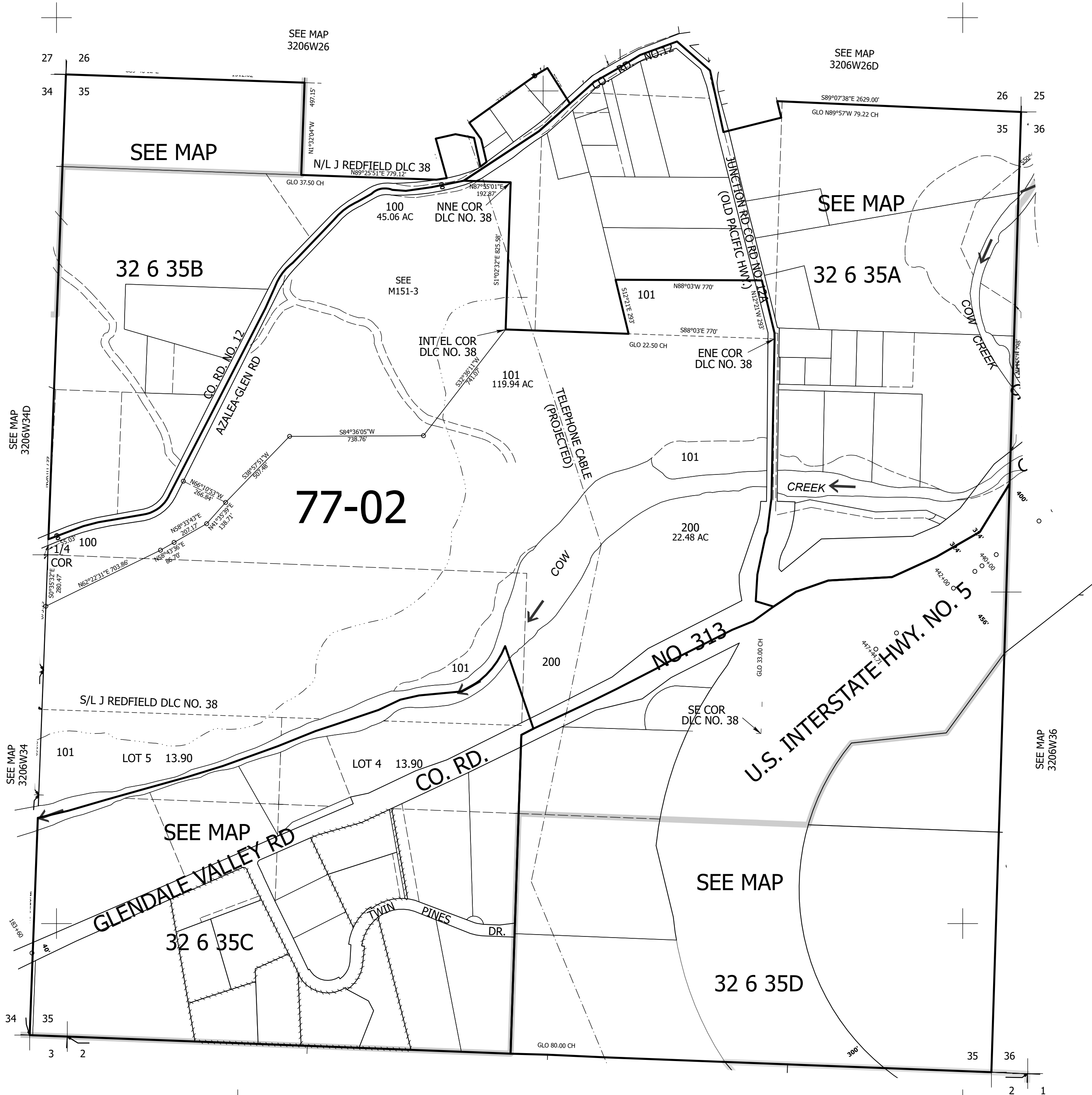
Upper Left:
123°23'30"W 42°45'23"N
4144810E 410520N ft

SEC.35 T.32S. R.06W. W.M.
DOUGLAS COUNTY
1" = 400'

Date Exported 2025-12-16

320635
& INDEX

CANCELLED NOS:
102



SEE MAP
3306W02

320635
& INDEX

Lower Right:
123°21'42"W 42°44'17"N
4152660E 403564N ft