

THIS MAP WAS PREPARED FOR ASSESSMENT PURPOSE ONLY.

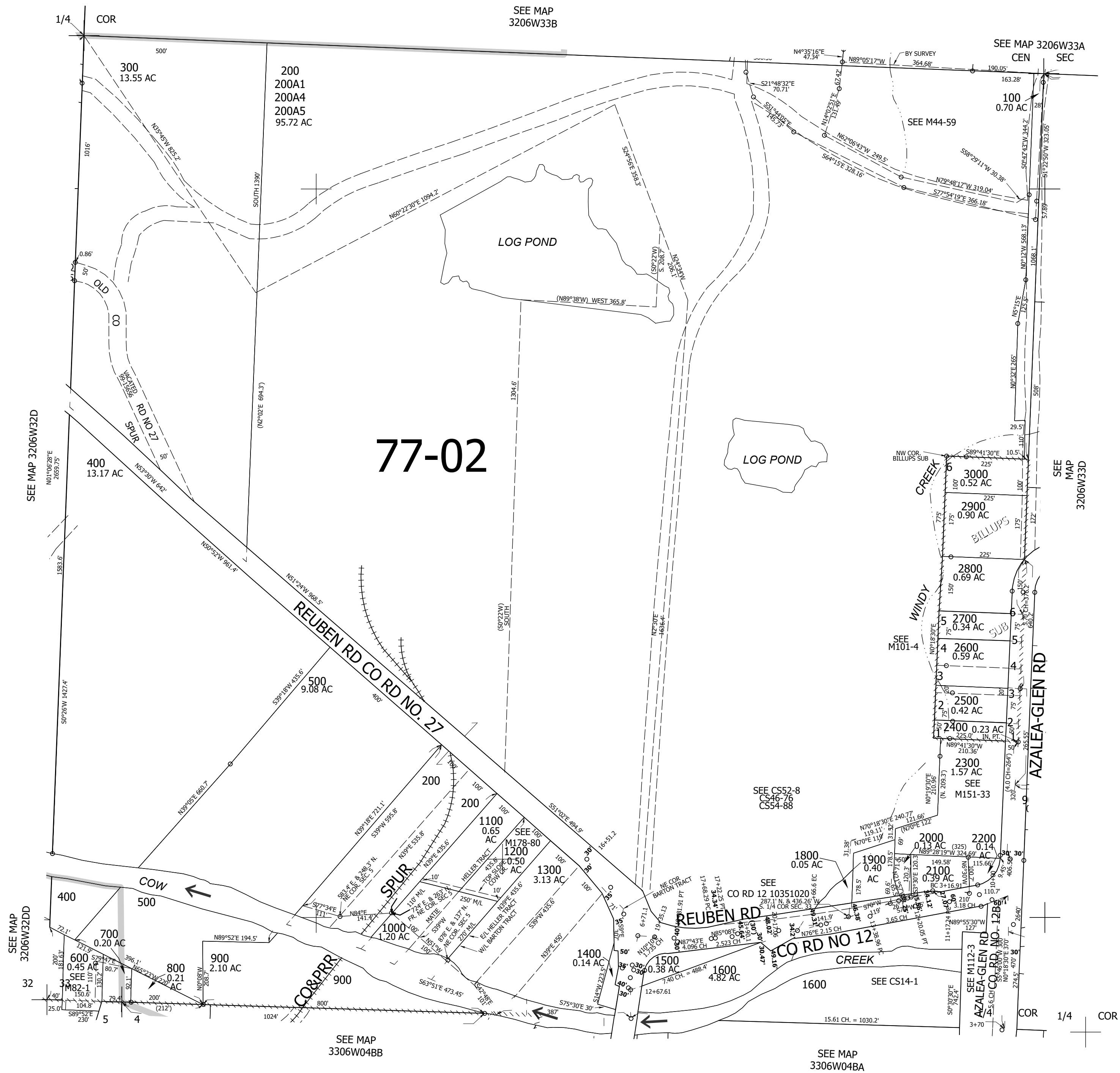
Upper Left:
123°25'44"W 42°44'53"N
4134735E 407824N ft

SW1/4 SEC.33 T.32S. R.06W. W.M.
DOUGLAS COUNTY
1" = 200'

Date Exported 2025-02-26

320633C
Glendale

CANCELLED NOS:
1700 200A2 200A3



Lower Right:
123°24'50"W 42°44'20"N
4138659E 404346N ft

320633C
Glendale