

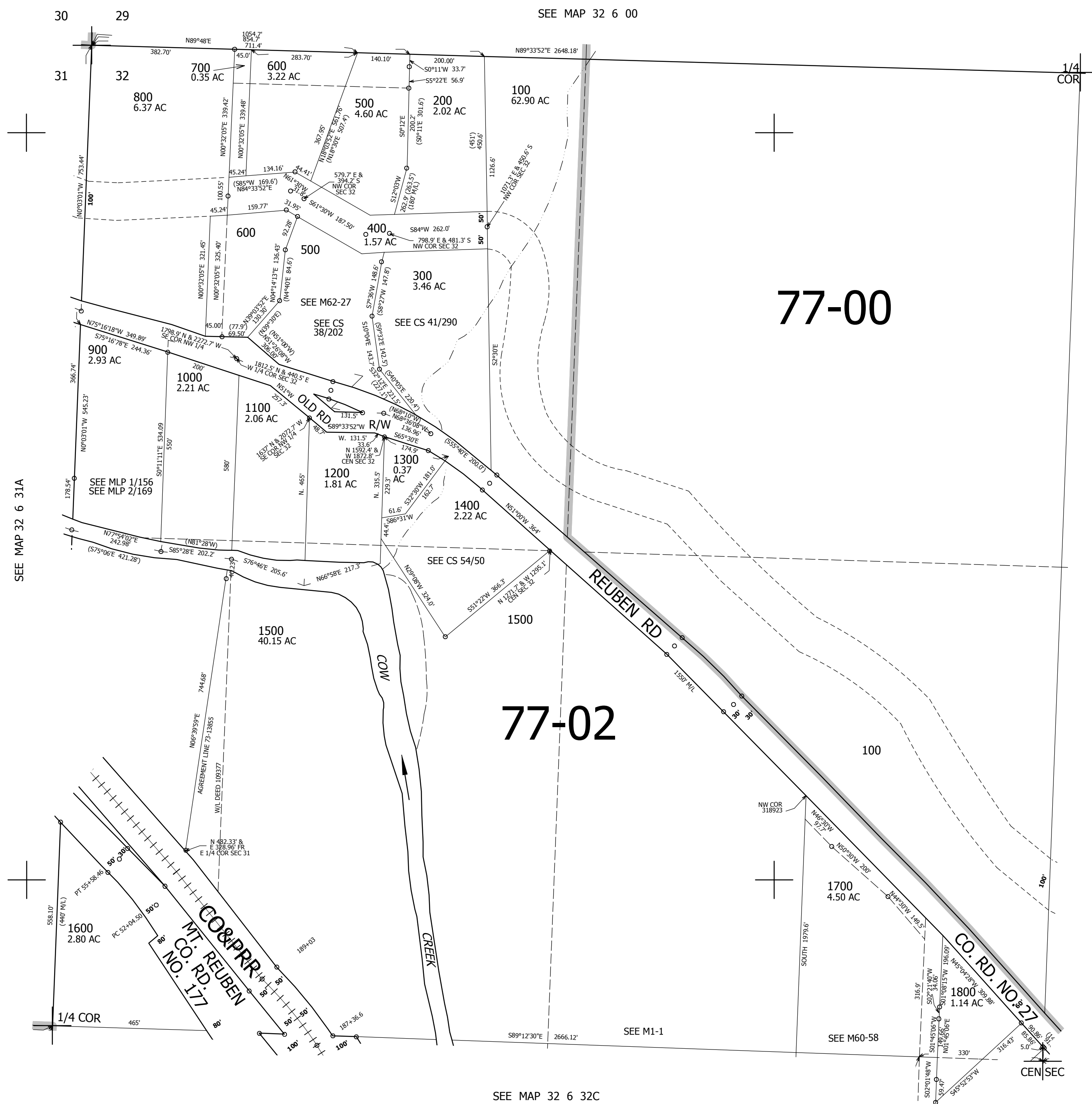
THIS MAP WAS PREPARED FOR ASSESSMENT PURPOSE ONLY.

NW1/4 SEC.32 T.32S. R.6W. W.M.
DOUGLAS COUNTY

1" = 200'

REVISED ON
10-21-16

32 6 32B



CANCELLED NO'S
100M1 400M1 700M1
800M1

SEE MAP 32 6 32

408,000

SEE MAP 32 6 32C

4,132,000

32 6 32B