

THIS MAP WAS PREPARED FOR ASSESSMENT PURPOSE ONLY.

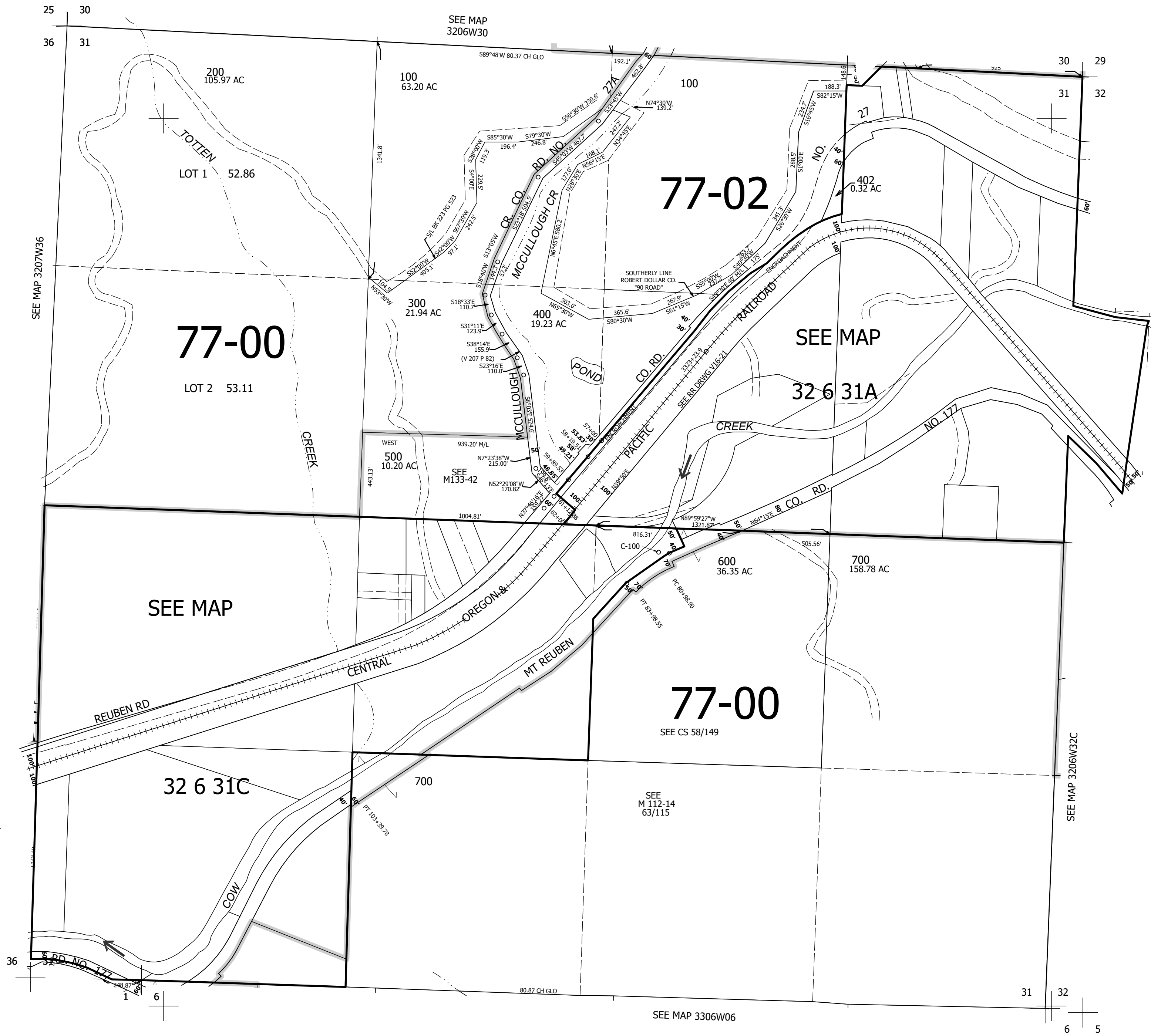
Upper Left:
123°28'17"W 42°45'23"N
4123459E 411260N ft

SEC.31 T.32S. R.06W. W.M.
DOUGLAS COUNTY
1" = 400'

Date Exported 2025-10-30

320631
& INDEX

CANCELLED NOS:
401 100M1 200M1
500M1 700M1 800
800M1



320631
& INDEX

Lower Right:
123°26'28"W 42°44'17"N
4131308E 404304N ft