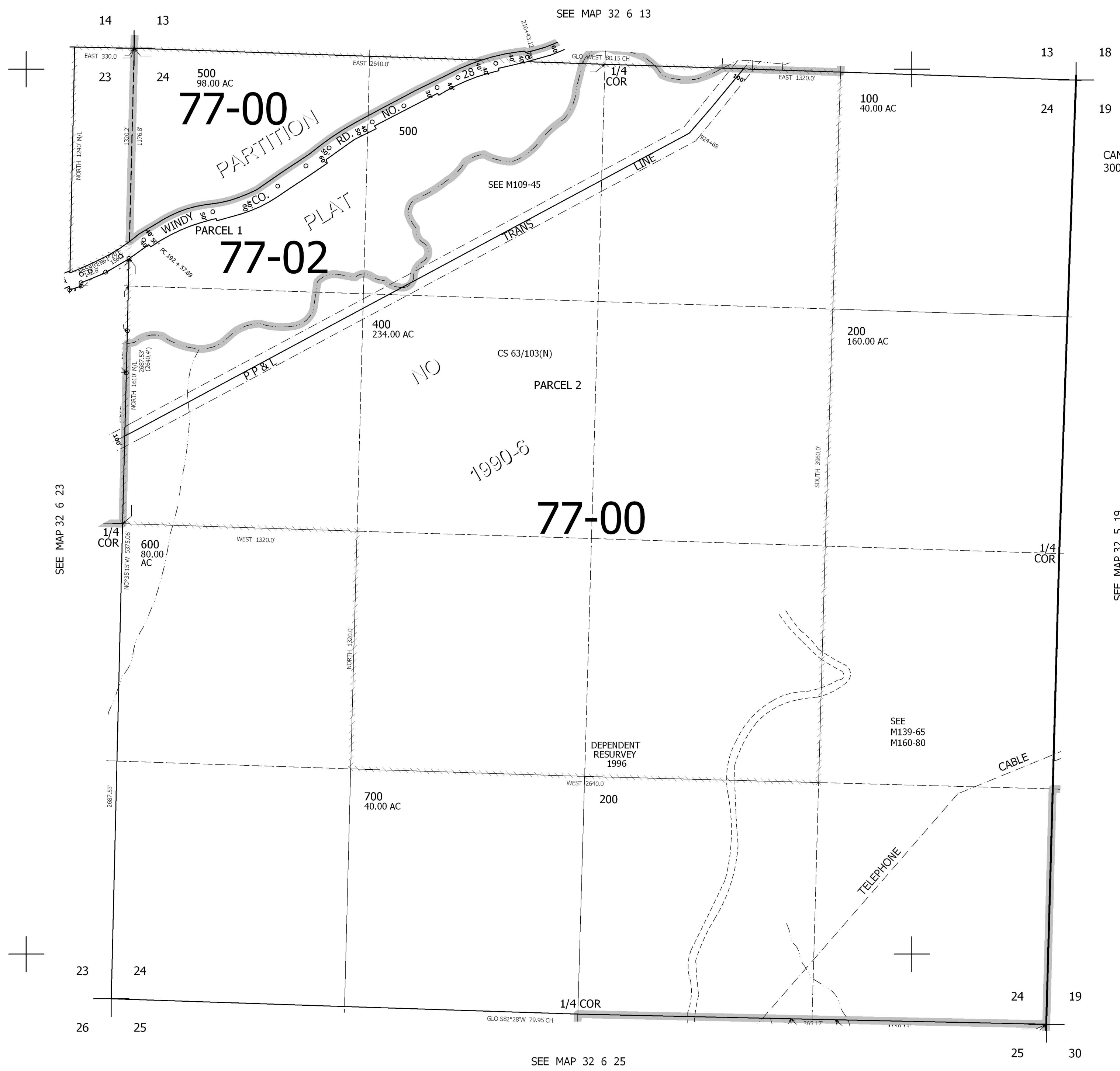


THIS MAP WAS PREPARED FOR ASSESSMENT PURPOSE ONLY.

SEC.24 T.32S. R.6W. W.M.
DOUGLAS COUNTY
1" = 400'

REVISED ON
2-2-00

32 6 24



CANCELLED NO'S
300 401

SEE MAP 32 5 19

SEE MAP 32 6 23

SEE MAP 32 6 25

415,000

32 6 24

4,156,000