

THIS MAP WAS PREPARED FOR ASSESSMENT PURPOSE ONLY.

Upper Left:
123°23'34"W 42°47'6"N
4144866E 420984N ft

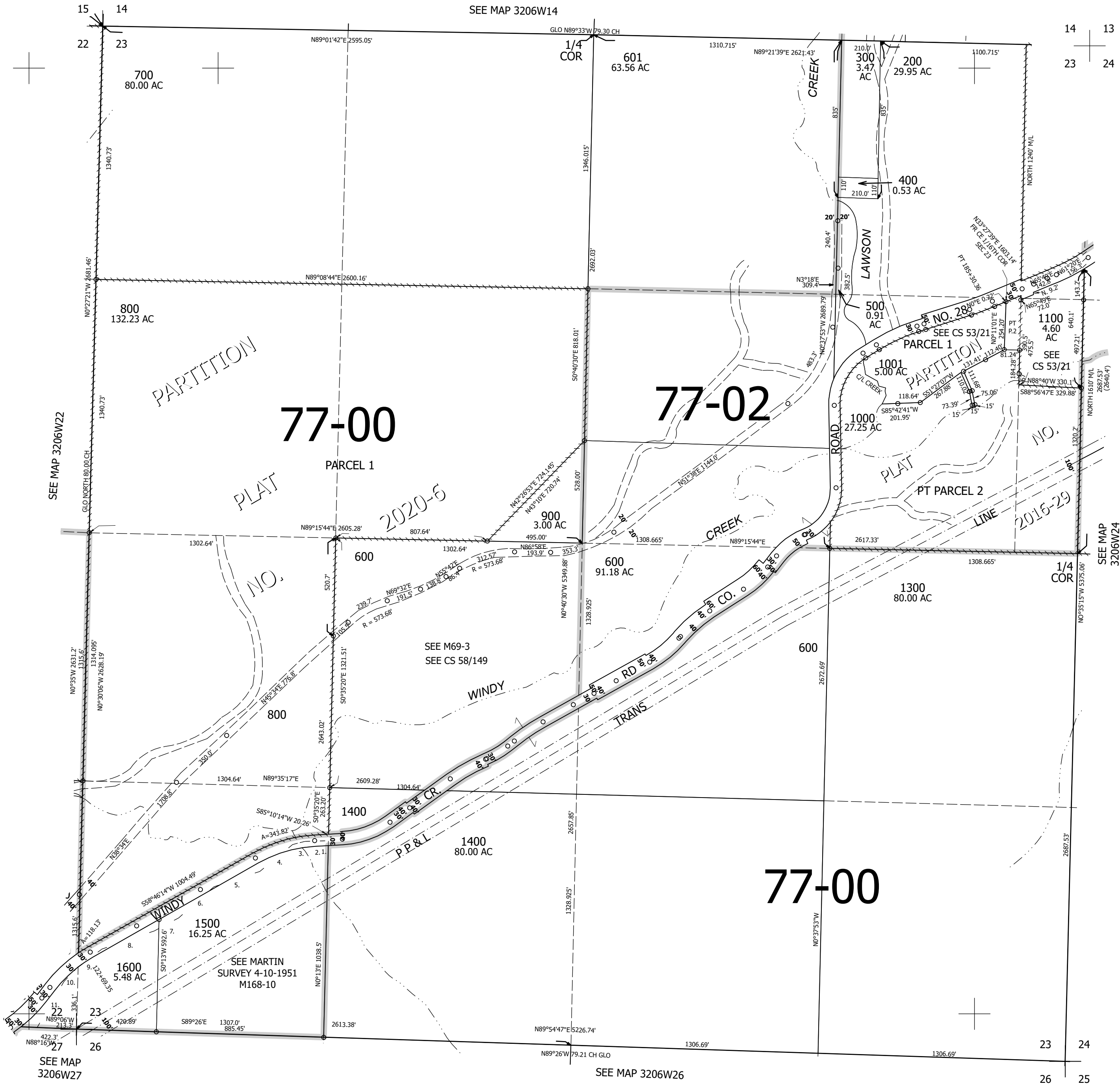
SEC.23 T.32S. R.06W. W.M.
DOUGLAS COUNTY
1" = 400'

Date Exported 2025-09-10

320623

- Parcels 1500 & 1600
1. WEST 17.3
 2. S87°07'W 107.1'
 3. S74°36'W 67.4'
 4. S49°27'W 224'
 5. S70°19'W 256.2'
 6. S47°24'W 248.3'
 7. S60°47'W 146.1'
 8. S69°41'W 292.8'
 9. S52°14'W 158.5'
 10. S42°40'W 105.9'
 11. S29°06'W 291.4'

CANCELLED NOS:
100 601M1 600M1
800M1 1002 1200



SEE MAP 3206W27

SEE MAP 3206W26

23 24
26 25

320623

Lower Right:
123°21'46"W 42°46'N
4152716E 414029N ft