

THIS MAP WAS PREPARED FOR ASSESSMENT PURPOSE ONLY.

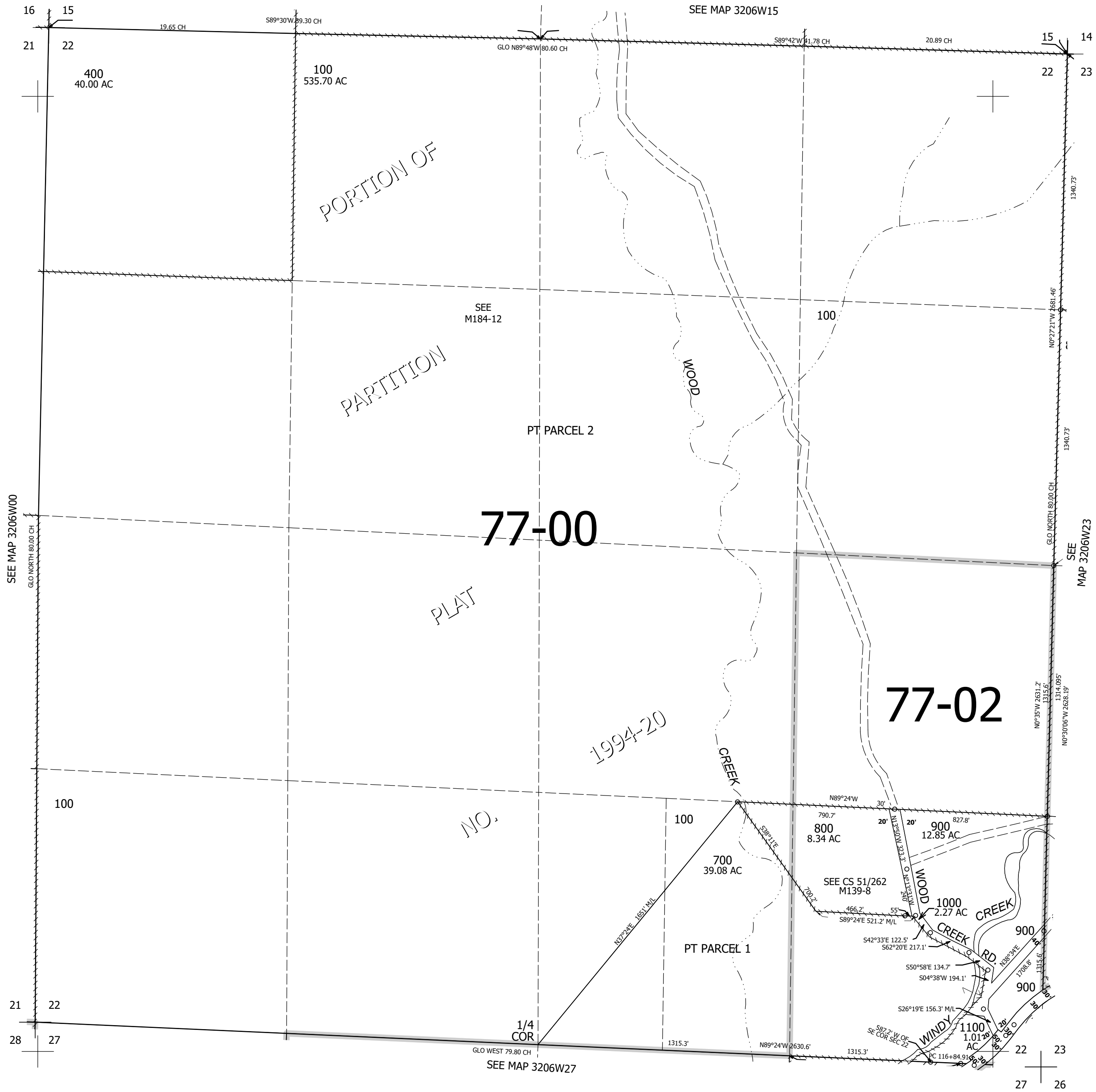
Upper Left:
123°24'43"W 42°47'6"N
4139757E 421164N ft

SEC.22 T.32S. R.06W. W.M.
DOUGLAS COUNTY
1" = 400'

Date Exported 2025-05-01

320622

CANCELLED NOS:
200 200M1 300
300M1 500 500M1
703 703M1 100M1
600M1 701M1 1000M1
600 701 702



320622

Lower Right:
123°22'55"W 42°46'N
4147607E 414209N ft