

THIS MAP WAS PREPARED FOR ASSESSMENT PURPOSE ONLY.

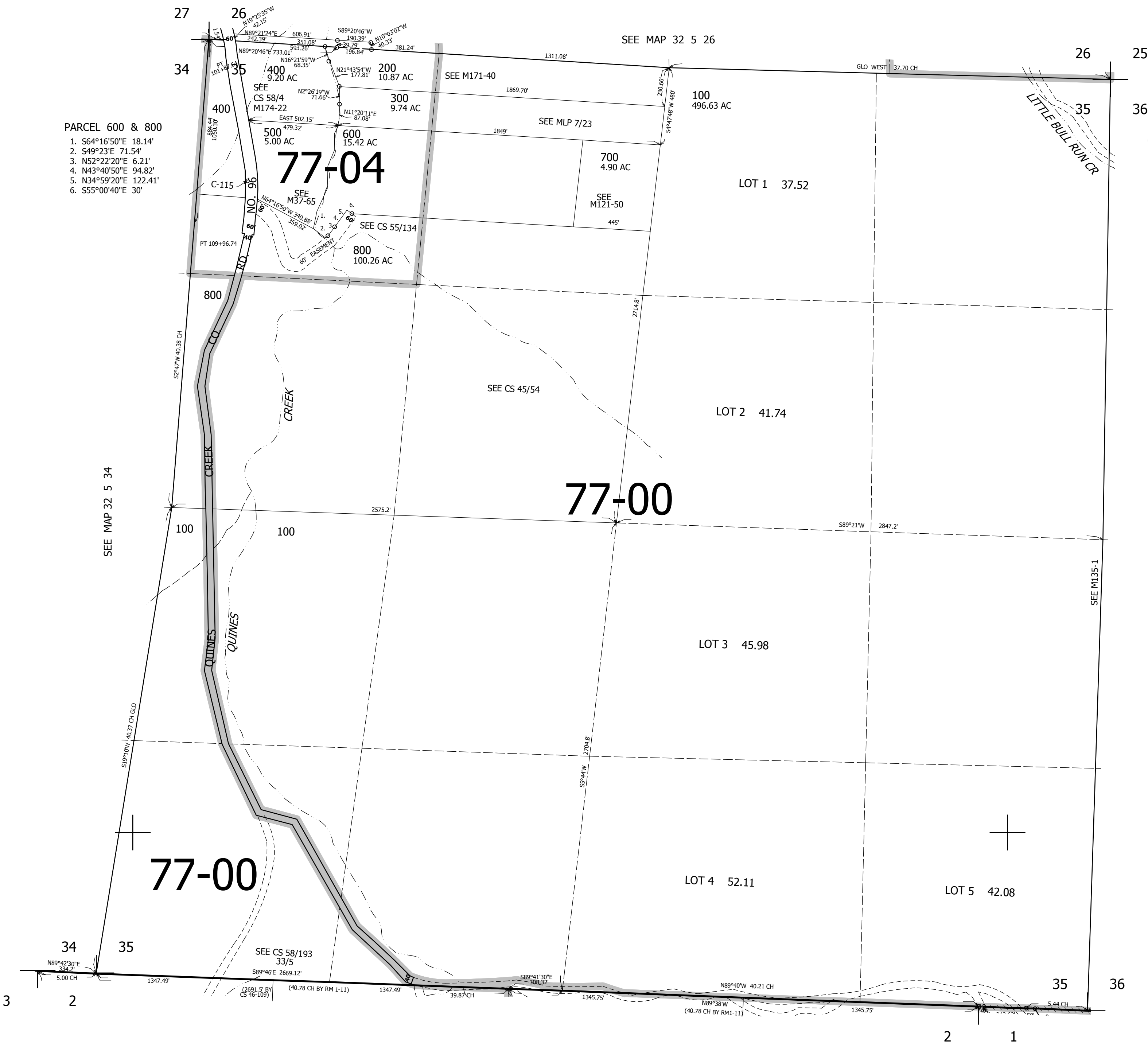
SEC.35 T.32S. R.5W. W.M.
DOUGLAS COUNTY
1" = 400'

REVISED ON
4-3-18

32 5 35

PARCEL 600 & 800

1. S64°16'50"E 18.14'
2. S49°23'E 71.54'
3. N52°22'20"E 6.21'
4. N43°40'50"E 94.82'
5. N34°59'20"E 122.41'
6. S55°00'40"E 30'



CANCELLED NO'S

SEE MAP 32 5 36

404,000

SEE MAP 33 5 2

4,183,000

32 5 35