

THIS MAP WAS PREPARED FOR ASSESSMENT PURPOSE ONLY.

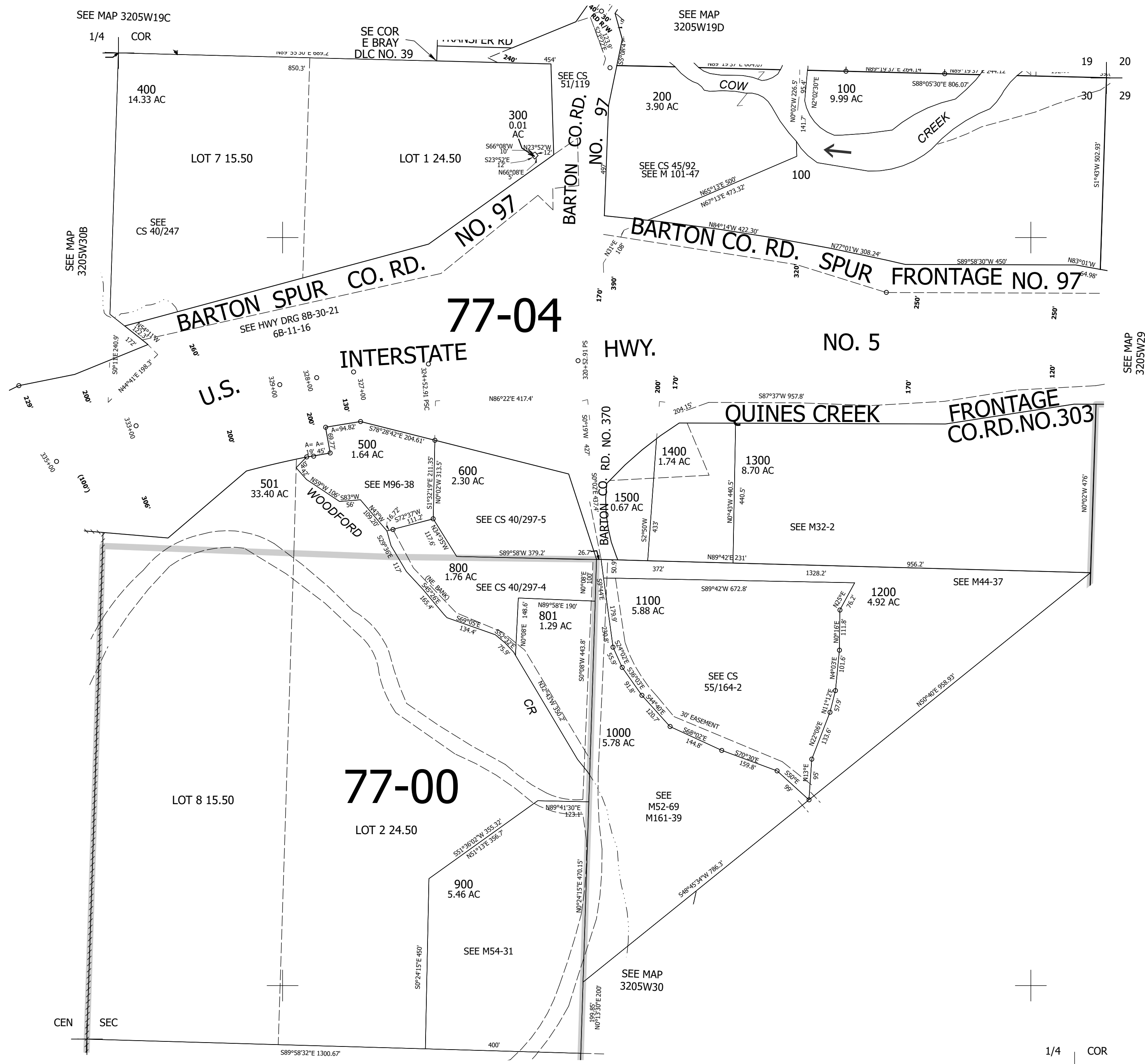
Upper Left:
123°20'25"W 42°46'11"N
4158774E 414950N ft

NE1/4 SEC.30 T.32S. R.05W. W.M.
DOUGLAS COUNTY
1" = 200'

Date Exported 2025-05-15

320530A

CANCELLED NOS:
700



1/4 COR

320530A

Lower Right:
123°19'31"W 42°45'38"N
4162699E 411473N ft