

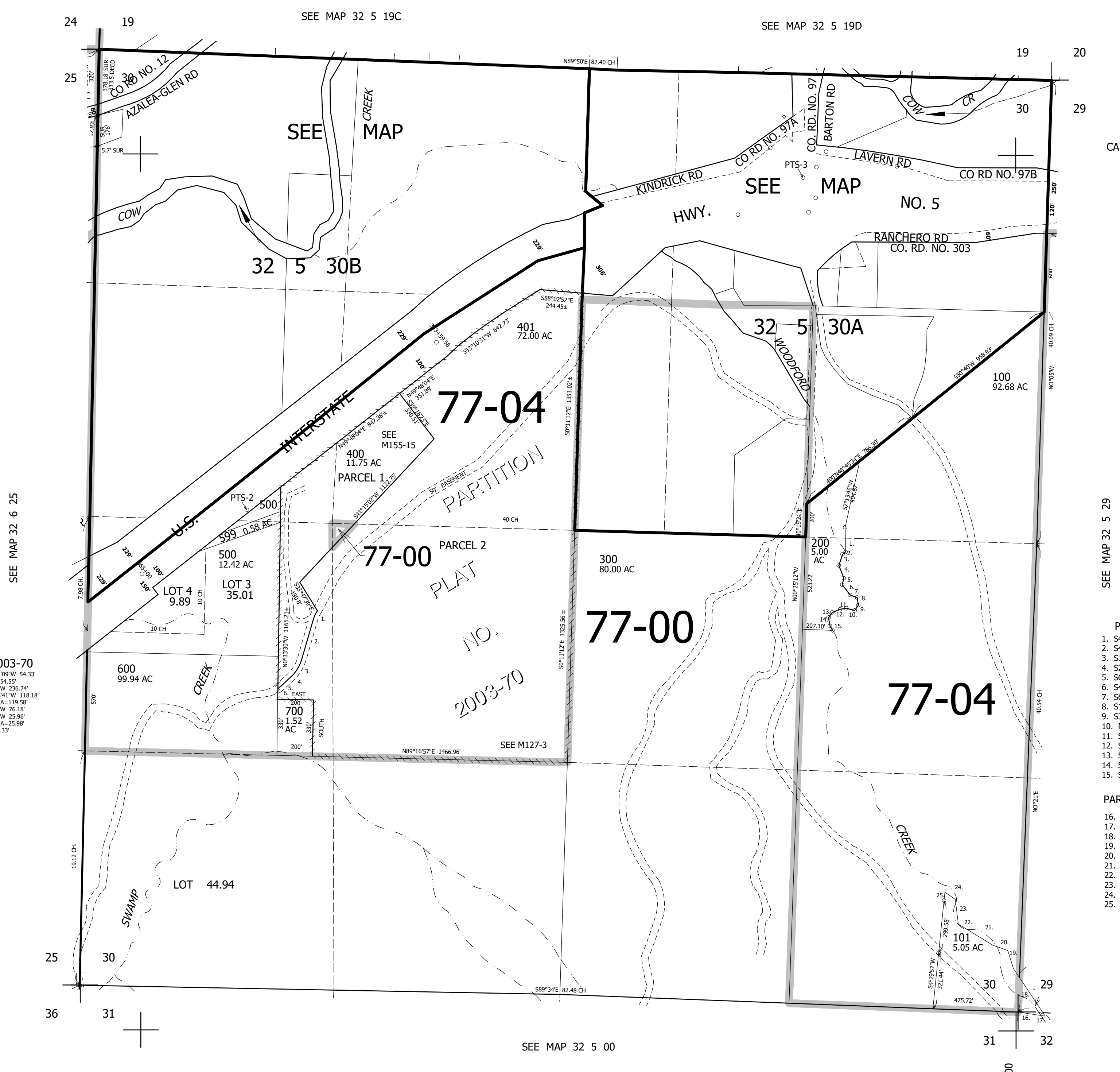
THIS MAP WAS PREPARED FOR ASSESSMENT PURPOSE ONLY.

SEC.30 T.32S. R.5W. W.M. DOUGLAS COUNTY

1" = 400'

REVISED ON 8-29-22

32 5 30 & INDEX



SEE MAP 32 6 25

24

19

SEE MAP 32 5 19C

SEE MAP 32 5 19D

19

20

25

30

29

CANCELLED NO'S

32 5 30B

32 5 30A

77-04

77-00

77-00

77-04

- P.P. 2003-70
1. LC=S23°11'09"W 54.33'  
R=175' A=54.55'
  2. S14°15'09"W 236.74'
  3. LC=S29°28'41"W 118.18'  
R=225.01' A=119.58'
  4. S44°42'12"W 76.18'
  5. S48°44'24"W 25.96'  
R=184.42' A=25.98'
  6. SOUTH 50.33'

- PARCEL 200
1. S4°31'52"E 131.07'
  2. S49°56'11"W 28.92'
  3. S16°30'20"W 67.25'
  4. S24°37'06"E 82.56'
  5. S6°39'02"W 34.86'
  6. S43°51'33"E 76.74'
  7. S69°59'E 43.61'
  8. S10°20'03"E 46.58'
  9. S31°17'09"W 36.62'
  10. N69°21'15"W 48.69'
  11. S69°57'18"W 38.03'
  12. S69°51'49"W 48.01'
  13. S42°48'24"W 37.4'
  14. S17°01'43"E 55.09'
  15. S30°E 25.35'

- PARCEL 101
16. S86°25'26"E 119.83'
  17. S86°25'26"E 39'
  18. N34°41'58"E 330.92'
  19. N18°03'22"W 104.32'
  20. N77°04'44"W 77.06'
  21. N60°55'22"W 181.67'
  22. N55°54'17"W 57.4'
  23. N8°10'13"W 140.07'
  24. N54°06'18"W 72.65'
  25. S4°29'57"W 58.88'

SEE MAP 32 5 00

4,162,000

409,000

32 5 30 & INDEX