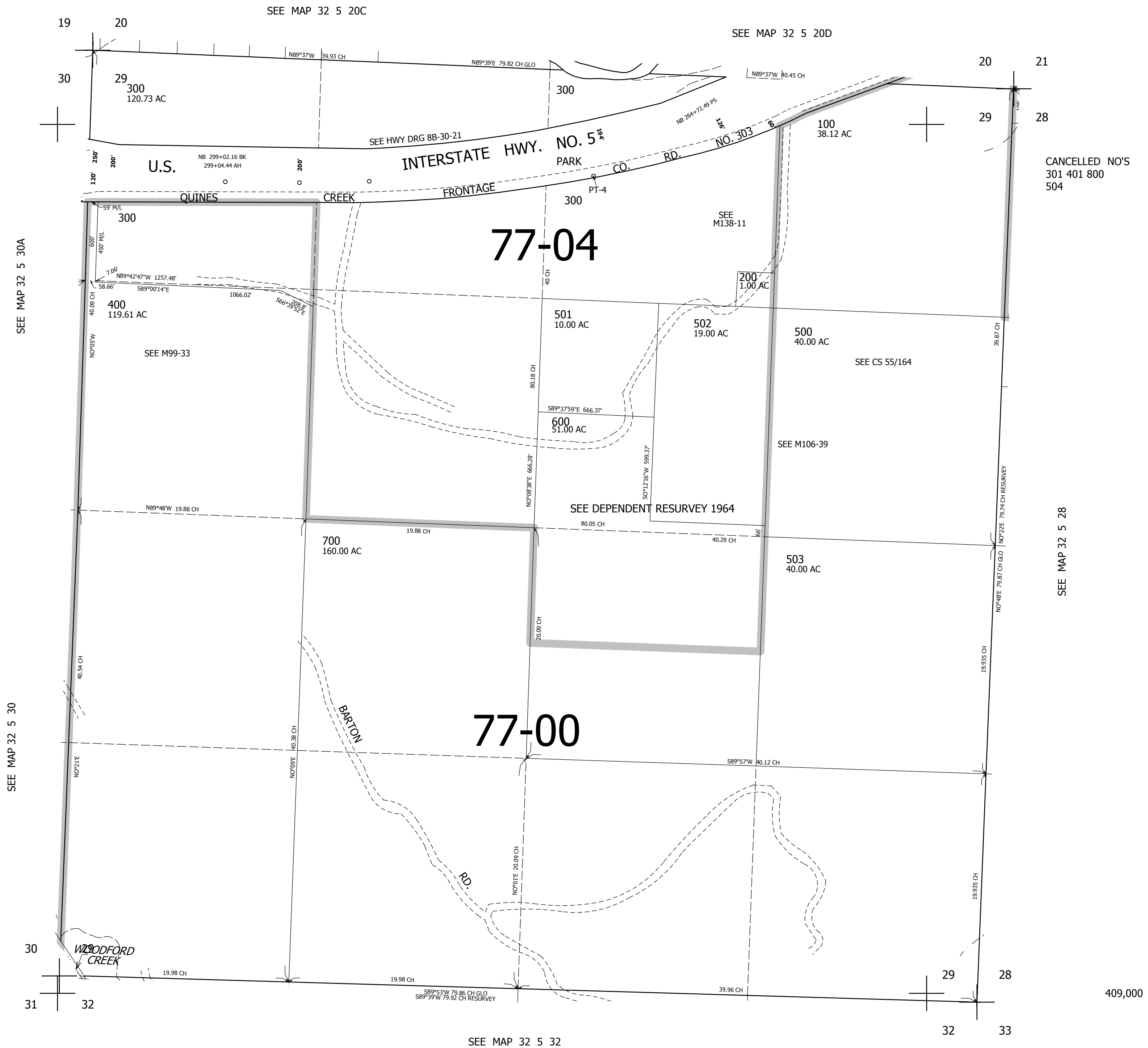


THIS MAP WAS PREPARED FOR ASSESSMENT PURPOSE ONLY.

SEC.29 T.32S. R.5W. W.M. DOUGLAS COUNTY  
1" = 400'

REVISED ON 3-18-92

32 5 29



CANCELLED NO'S  
301 401 800  
504

SEE MAP 32 5 28

409,000

4,167,000

32 5 29