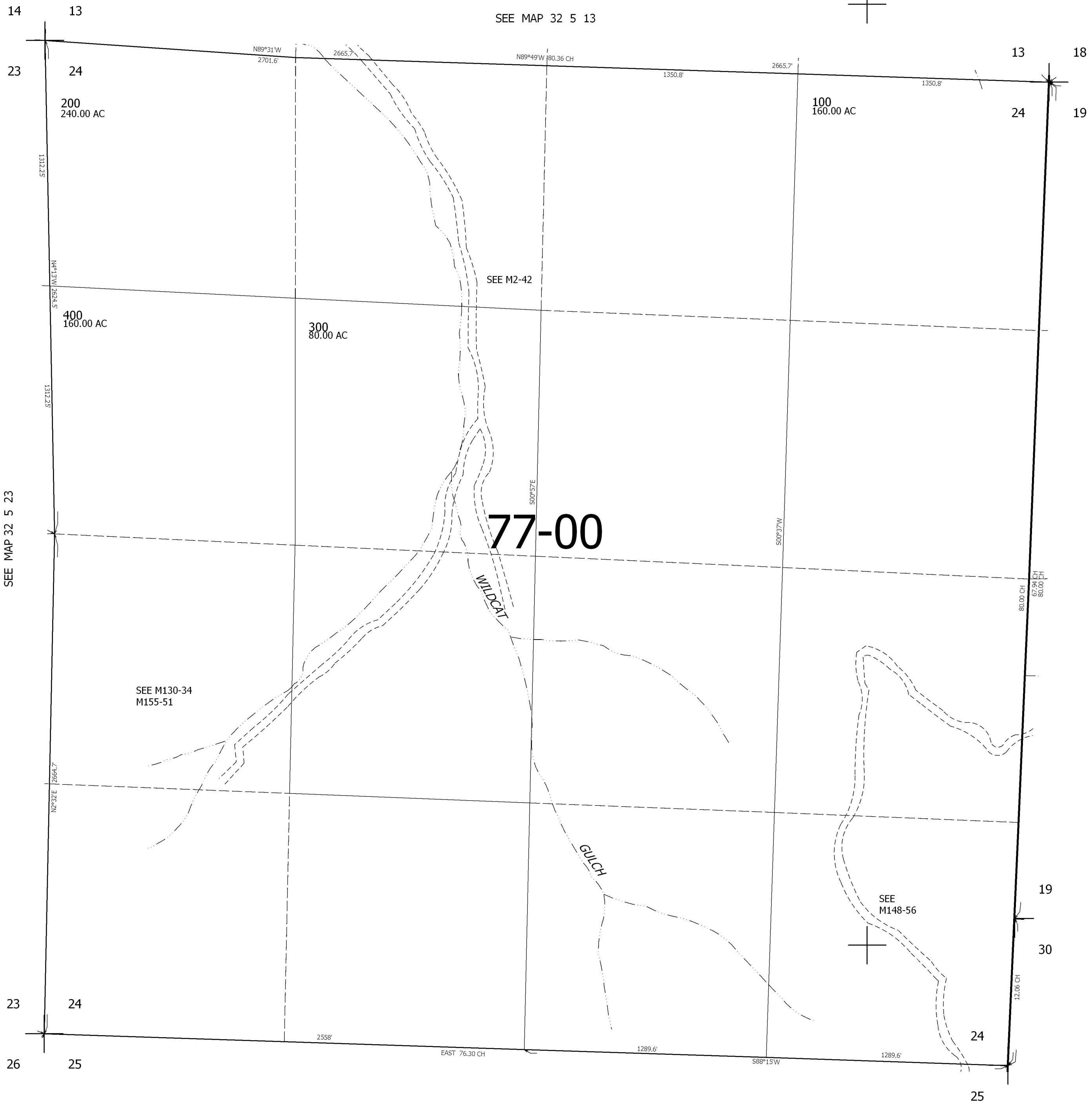
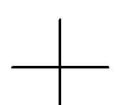
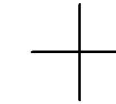
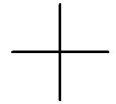


THIS MAP WAS PREPARED FOR ASSESSMENT PURPOSE ONLY.

SEC.24 T.32S. R.5W. W.M.
DOUGLAS COUNTY
1" = 400'

REVISED ON

32 5 24



CANCELLED NO'S
100M1 300M1 400M1

414,000

4,188,000

32 5 24