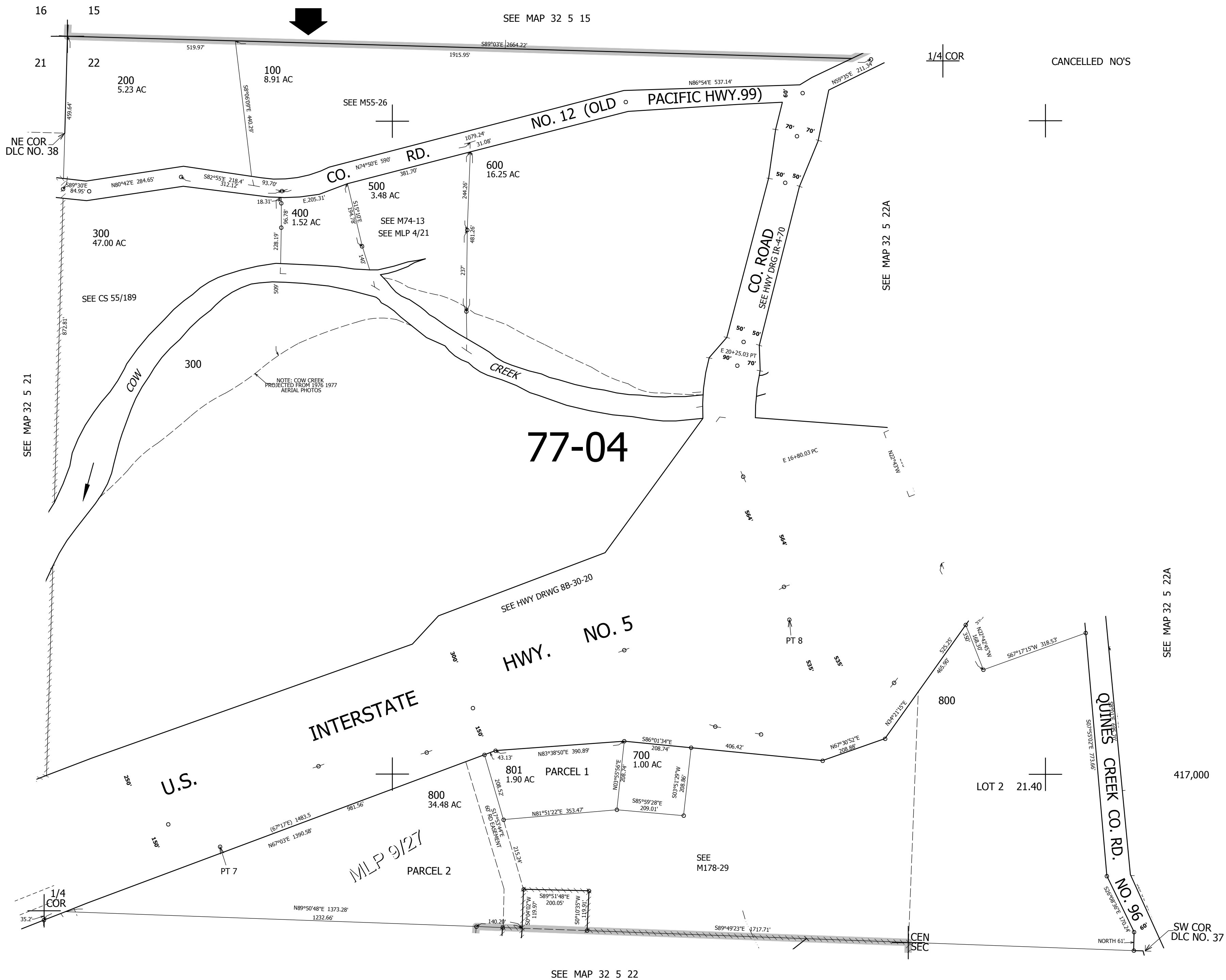


THIS MAP WAS PREPARED FOR ASSESSMENT PURPOSE ONLY.

NW1/4 SEC.22 T.32S. R.5W. W.M.  
DOUGLAS COUNTY  
1" = 200'

REVISED ON  
9-2-09

32 5 22B



77-04

HWY. NO. 5

INTERSTATE

U.S.

QUINES CREEK CO. RD. NO. 96

NO. 12 (OLD) PACIFIC HWY. 99

CO. RD.

CO. ROAD  
SEE HWY DRG IR-4-70

COW CREEK

CREEK

SEE HWY DRWG 88-30-20

PARCEL 1

PARCEL 2

LOT 2

SW COR  
DLC NO. 37

NE COR  
DLC NO. 38

CANCELLED NO'S

1/4 COR

SEE MAP 32 5 21

SEE MAP 32 5 15

SEE MAP 32 5 22A

SEE MAP 32 5 22A

SEE MAP 32 5 22

4,176,000

32 5 22B