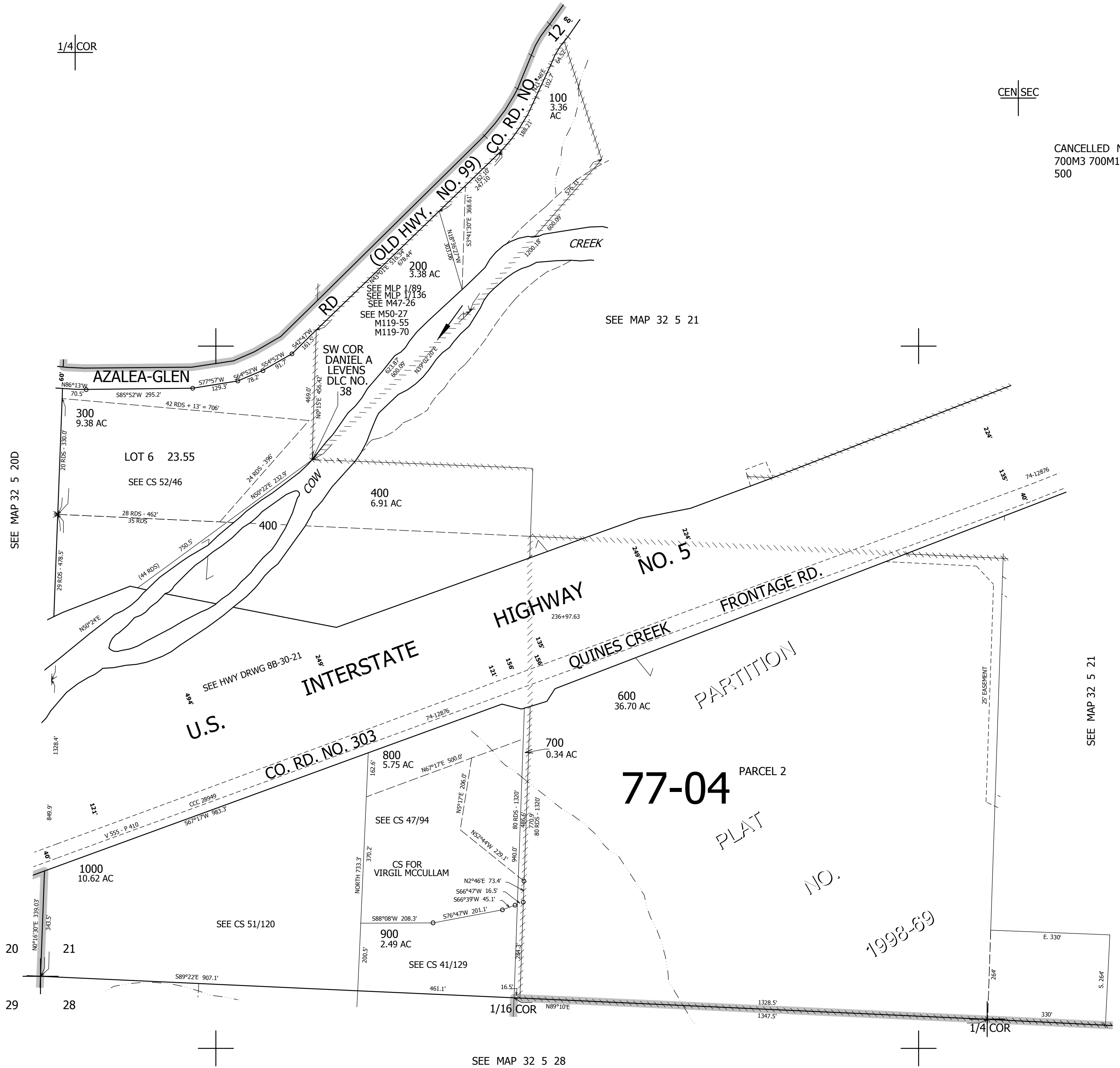


THIS MAP WAS PREPARED FOR ASSESSMENT PURPOSE ONLY.

SW1/4 SEC.21 T.32S. R.5W. W.M.
DOUGLAS COUNTY
1" = 200'

REVISED ON
4-9-19

32 5 21C



CANCELLED NO'S
700M3 700M1 700M2
500

SEE MAP 32 5 20D

SEE MAP 32 5 21

SEE MAP 32 5 21

SEE MAP 32 5 28

414,000

4,170,000

32 5 21C