

THIS MAP WAS PREPARED FOR ASSESSMENT PURPOSE ONLY.

SEC.21 T.32S. R.5W. W.M.
DOUGLAS COUNTY

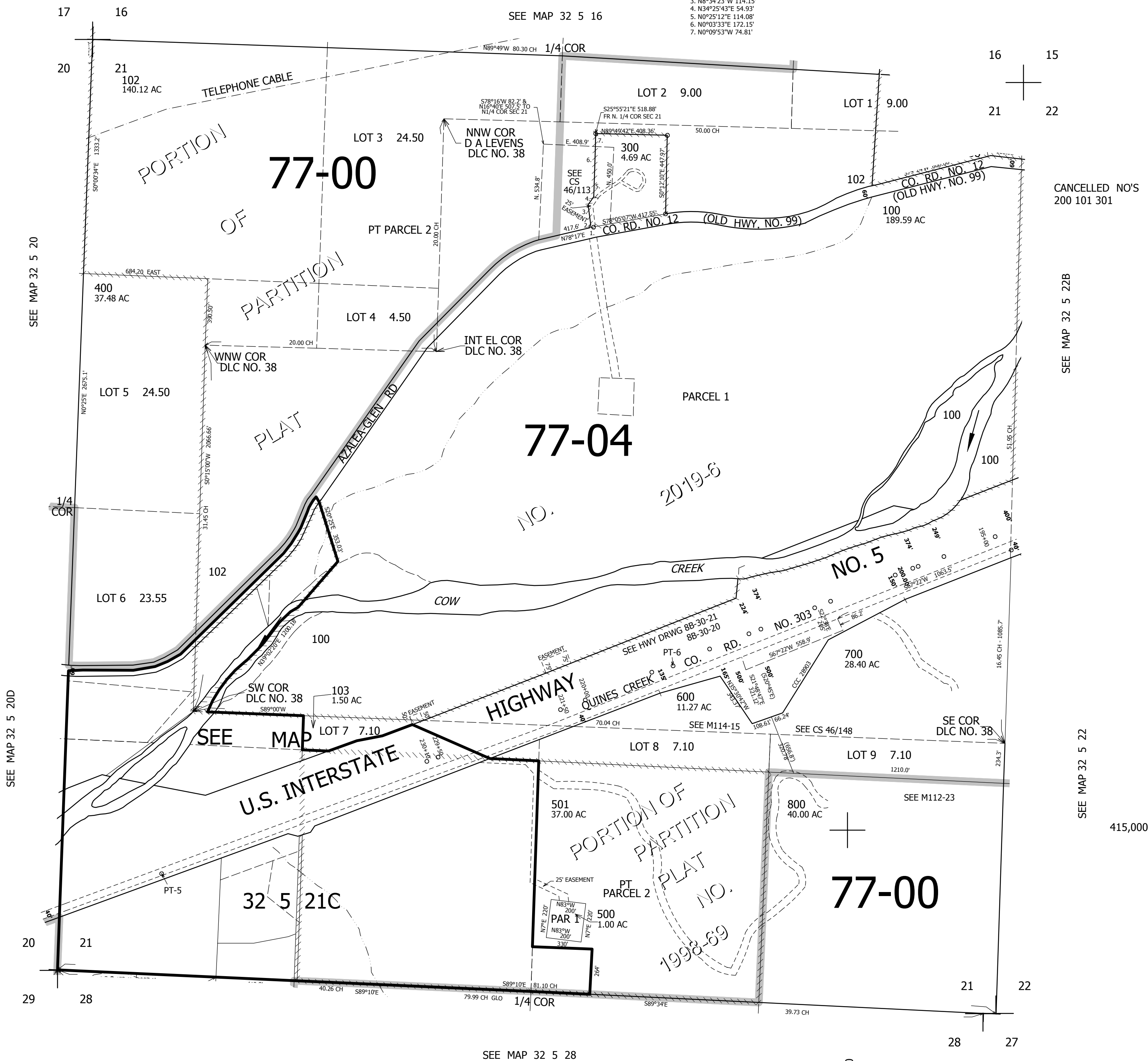
1" = 400'

REVISED ON
4-9-19

32 5 21
& INDEX

TAXLOT 300

1. S75°38'02"W 23.66'
2. N18°51'19"E 20.72'
3. N8°34'23"W 114.15'
4. N34°25'43"E 54.93'
5. N0°25'12"E 114.08'
6. N0°03'33"E 172.15'
7. N0°09'53"W 74.81'



CANCELLED NO'S
200 101 301

SEE MAP 32 5 22B

SEE MAP 32 5 22

415,000

32 5 21
& INDEX

4,172,000