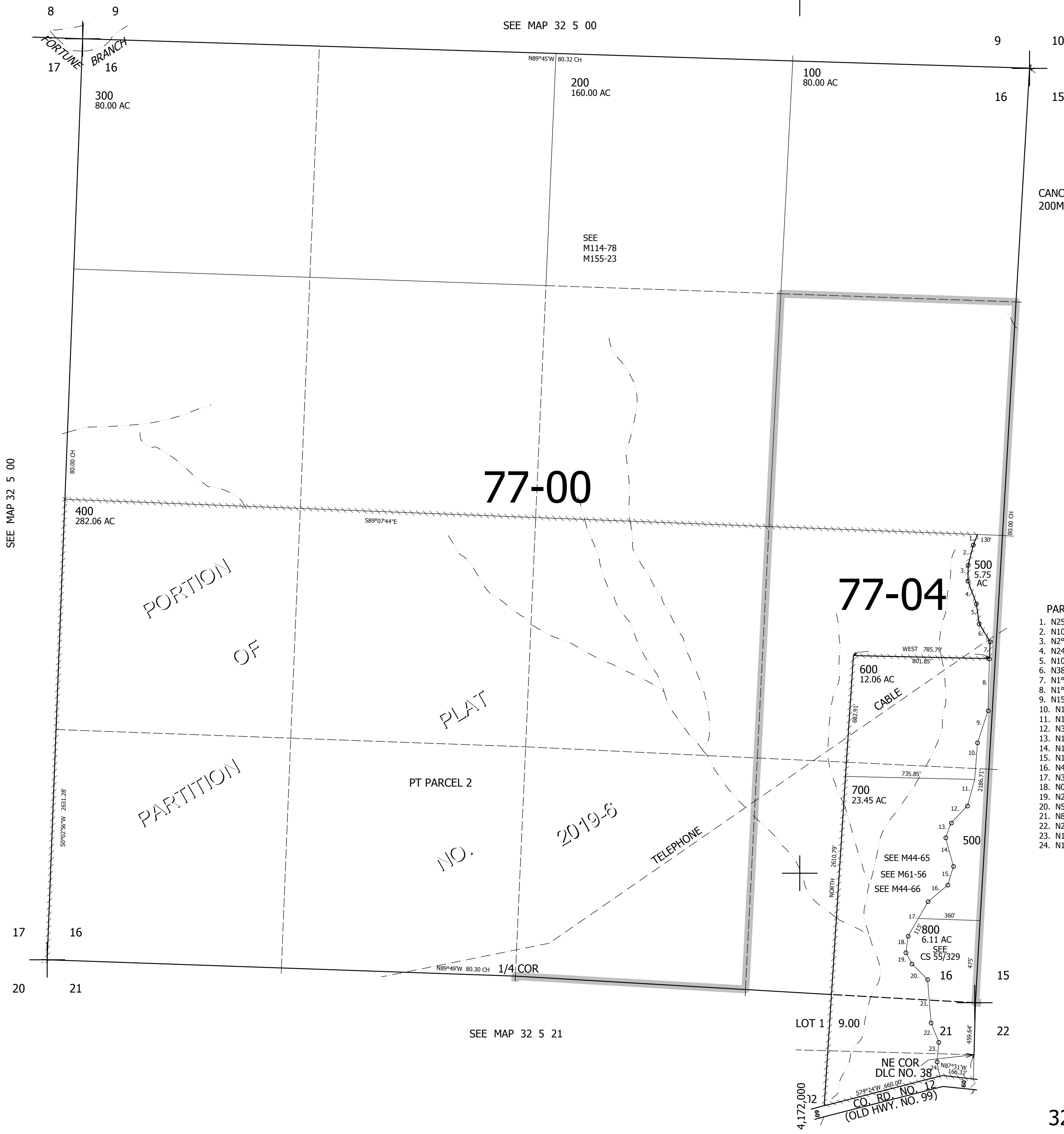
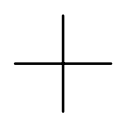
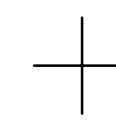
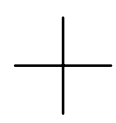


THIS MAP WAS PREPARED FOR ASSESSMENT PURPOSE ONLY.

SEC.16 T.32S. R.5W. W.M.  
DOUGLAS COUNTY  
1" = 400'

REVISED ON  
4-8-19

32 5 16



SEE MAP 32 5 00

SEE MAP 32 5 00

SEE MAP 32 5 21

SEE MAP 32 5 15

CANCELLED NO'S  
200M1 300M1 500M1

- PARCEL 500
1. N25°00'E 75.43'
  2. N10°47'E 116.36'
  3. N2°41'W 80.8'
  4. N24°22'W 139.75'
  5. N10°32'W 113.73'
  6. N38°37'W 119.82'
  7. N1°14'W 88.10'
  8. N1°14'W 300'
  9. N15°16'E 189.17'
  10. N1°53'E 200.6'
  11. N14°01'E 175.15'
  12. N39°28'E 123.91'
  13. N14°01'E 98.65'
  14. N19°15'W 158.18'
  15. N16°14'E 119.64'
  16. N46°15'E 158.84'
  17. N30°00'E 216.67'
  18. N0°21'W 87.34'
  19. N29°38'W 73.89'
  20. N50°54'W 124.63'
  21. N8°14'W 253.7'
  22. N26°24'W 129.73'
  23. N1°01'E 108.64'
  24. N10°56'W 123.56'

420,000

32 5 16