

THIS MAP WAS PREPARED FOR ASSESSMENT PURPOSE ONLY.

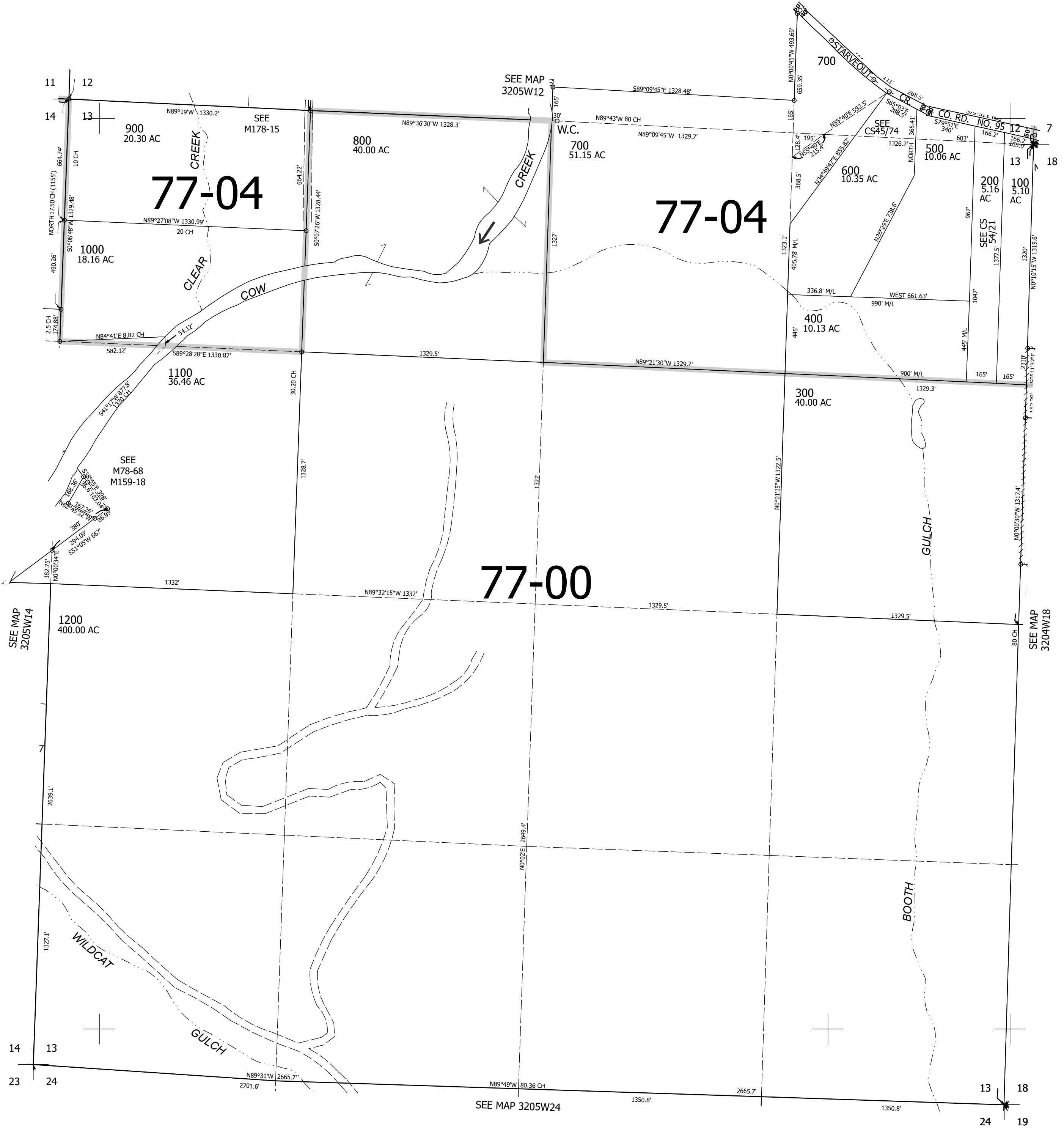
Upper Left:
123°15'13"W 42°47'59"N
4182393E 425066N ft

SEC.13 T.32S. R.05W. W.M.
DOUGLAS COUNTY
1" = 400'

Date Exported 2025-02-04

320513

CANCELLED NOS:
601



320513

Lower Right:
123°13'25"W 42°46'53"N
4190242E 418111N ft