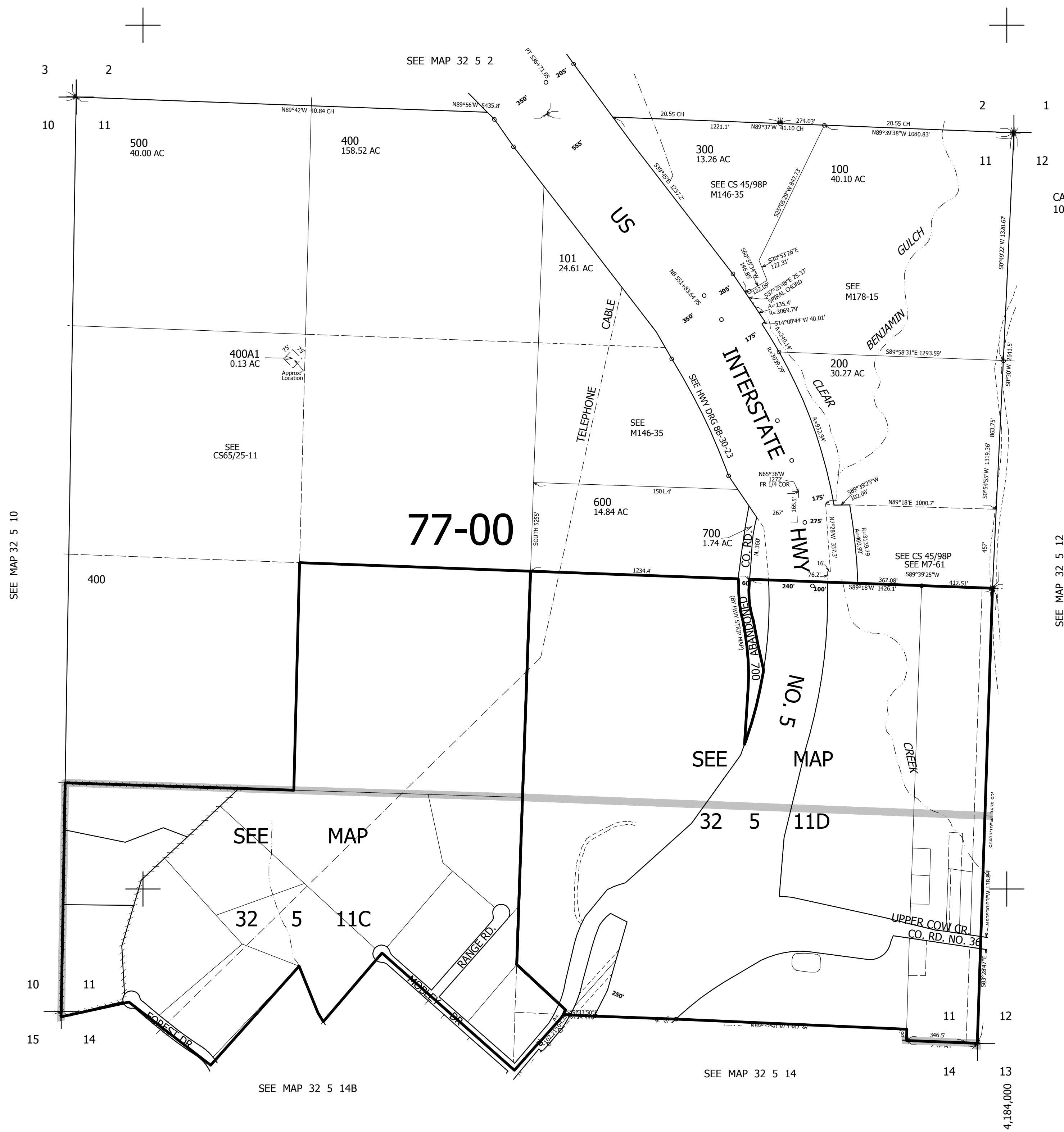


THIS MAP WAS PREPARED FOR ASSESSMENT PURPOSE ONLY.

SEC.11 T.32S. R.5W. W.M.  
DOUGLAS COUNTY  
1" = 400'

REVISED ON  
11-17-20

32 5 11  
& INDEX



CANCELLED NO'S  
102

SEE MAP 32 5 10

SEE MAP 32 5 12

425,000

SEE MAP 32 5 14B

SEE MAP 32 5 14

32 5 11  
& INDEX

4,184,000