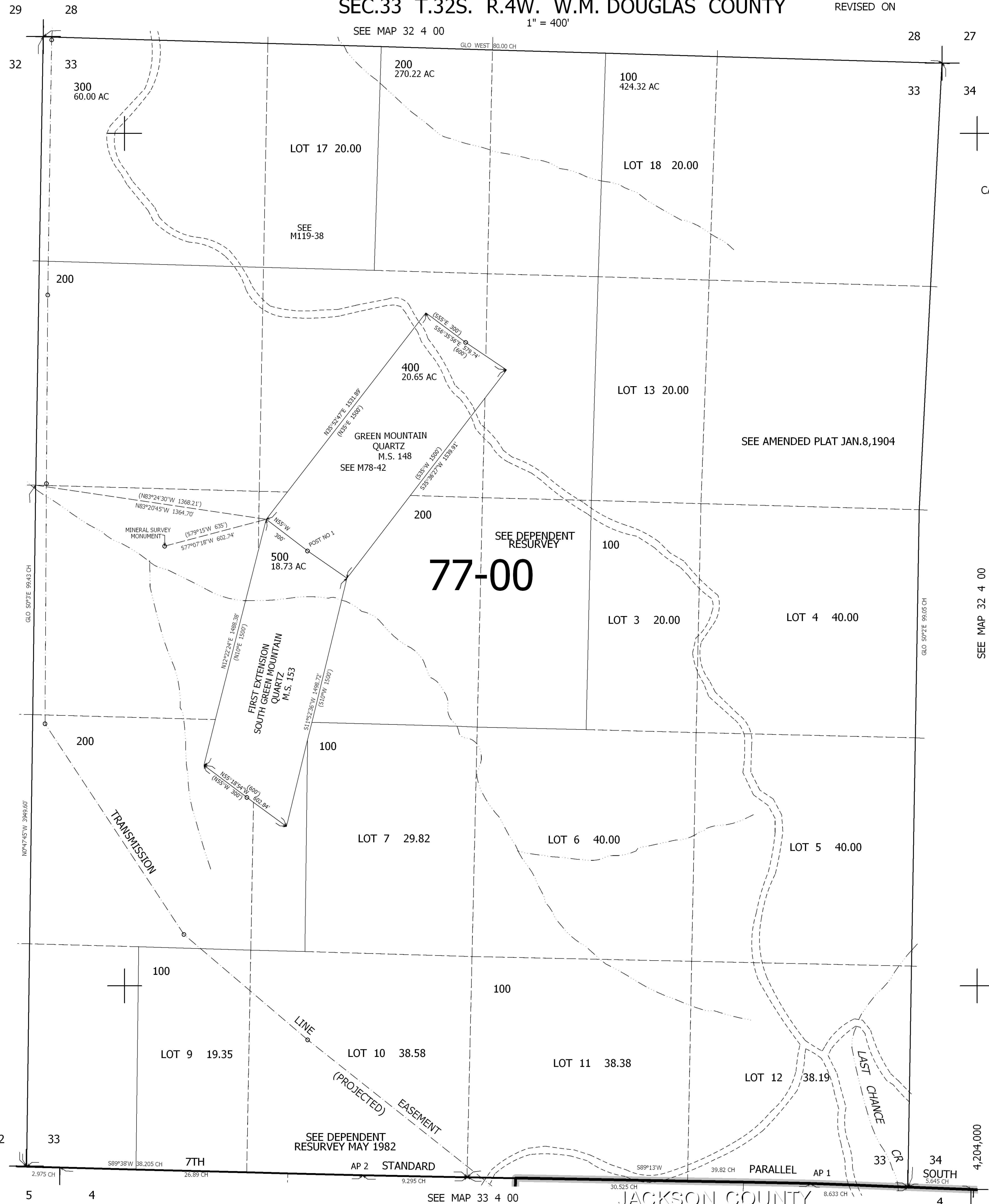


SEE MAP 32 4 00

GLO. WEST 80.00 CH

THIS MAP WAS PREPARED FOR ASSESSMENT PURPOSE ONLY.



77-00

CANCELLED NO'S

SEE MAP 32 4 32

SEE MAP 32 4 00

403,000

32 4 33

JACKSON COUNTY

5

4

4

3

2.975 CH

58°33'38"W 38.205 CH

7TH 26.89 CH

AP 2 STANDARD 9.295 CH

30.525 CH

58°9'13"W 39.82 CH

PARALLEL AP 1 8.633 CH

34 SOUTH 8.645 CH

4,204,000