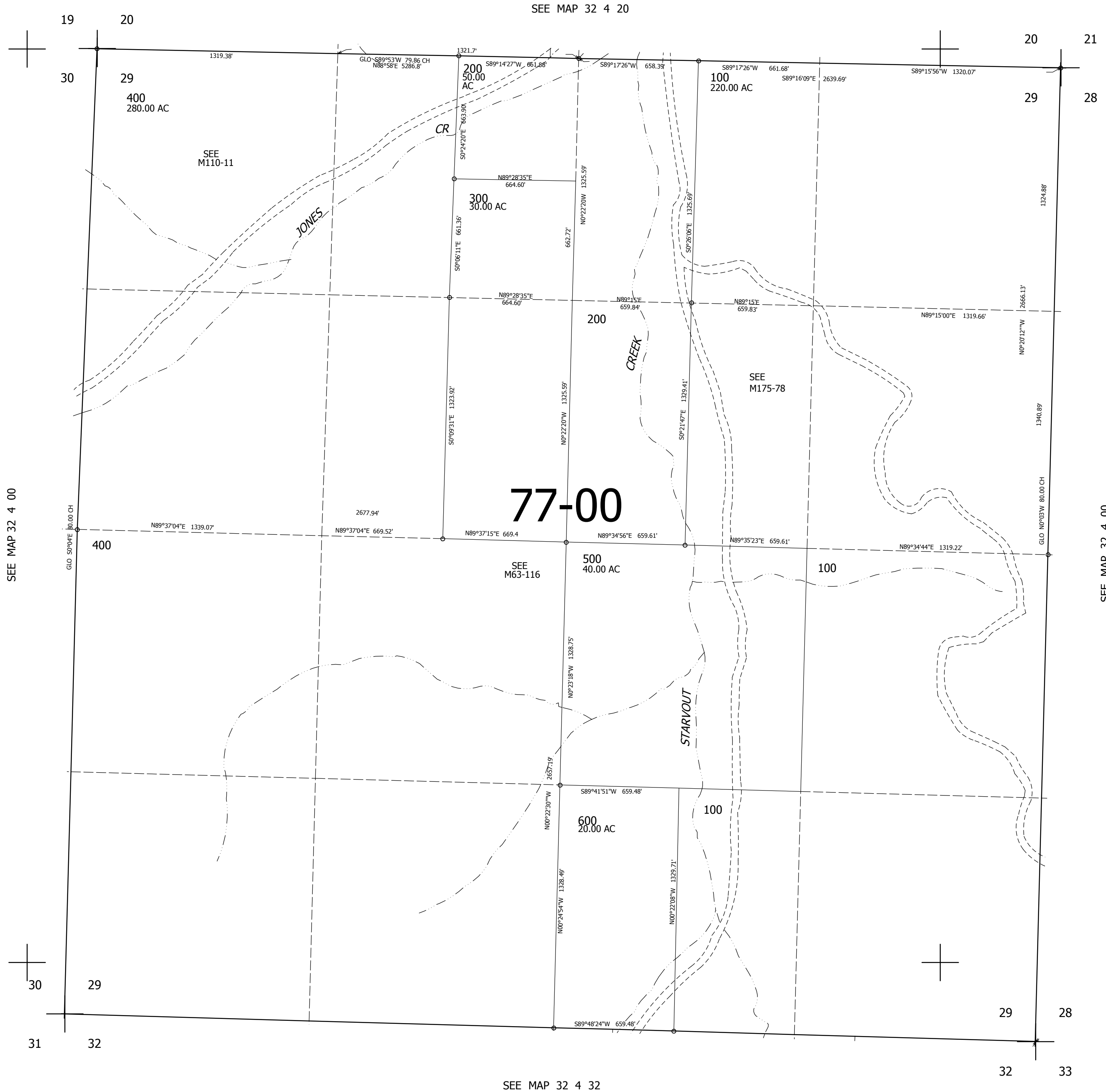


THIS MAP WAS PREPARED FOR ASSESSMENT PURPOSE ONLY.

SEC.29 T.32S. R.4W. W.M.
DOUGLAS COUNTY
1" = 400'

REVISED ON

32 4 29



CANCELLED NO'S
300M1 600M1

77-00

409,000

4,198,000

32 4 29