

THIS MAP WAS PREPARED FOR ASSESSMENT PURPOSE ONLY.

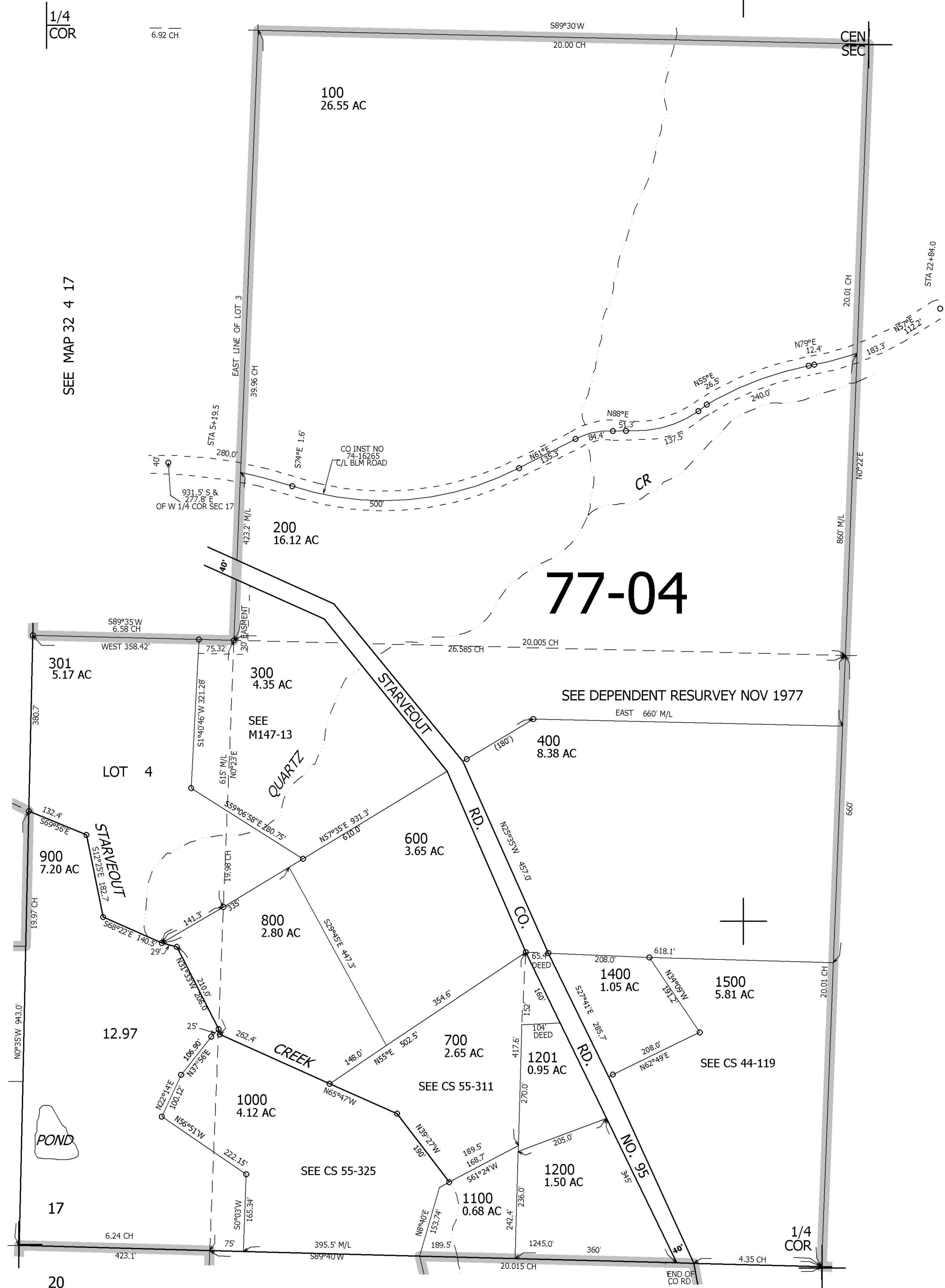
SW1/4 SEC.17 T.32S. R.4W. W.M.  
DOUGLAS COUNTY  
1" = 200'

REVISED ON  
2-8-06

32 4 17C

SEE MAP 32 4 17

CANCELLED NO'S  
400M1 300M1 200M1  
500M1 600M1 700M1  
800M1 900M1 1000M1  
1100M1 1300



SEE MAP 32 4 17

420,000

SEE MAP 32 4 20

4,196,000

32 4 17C