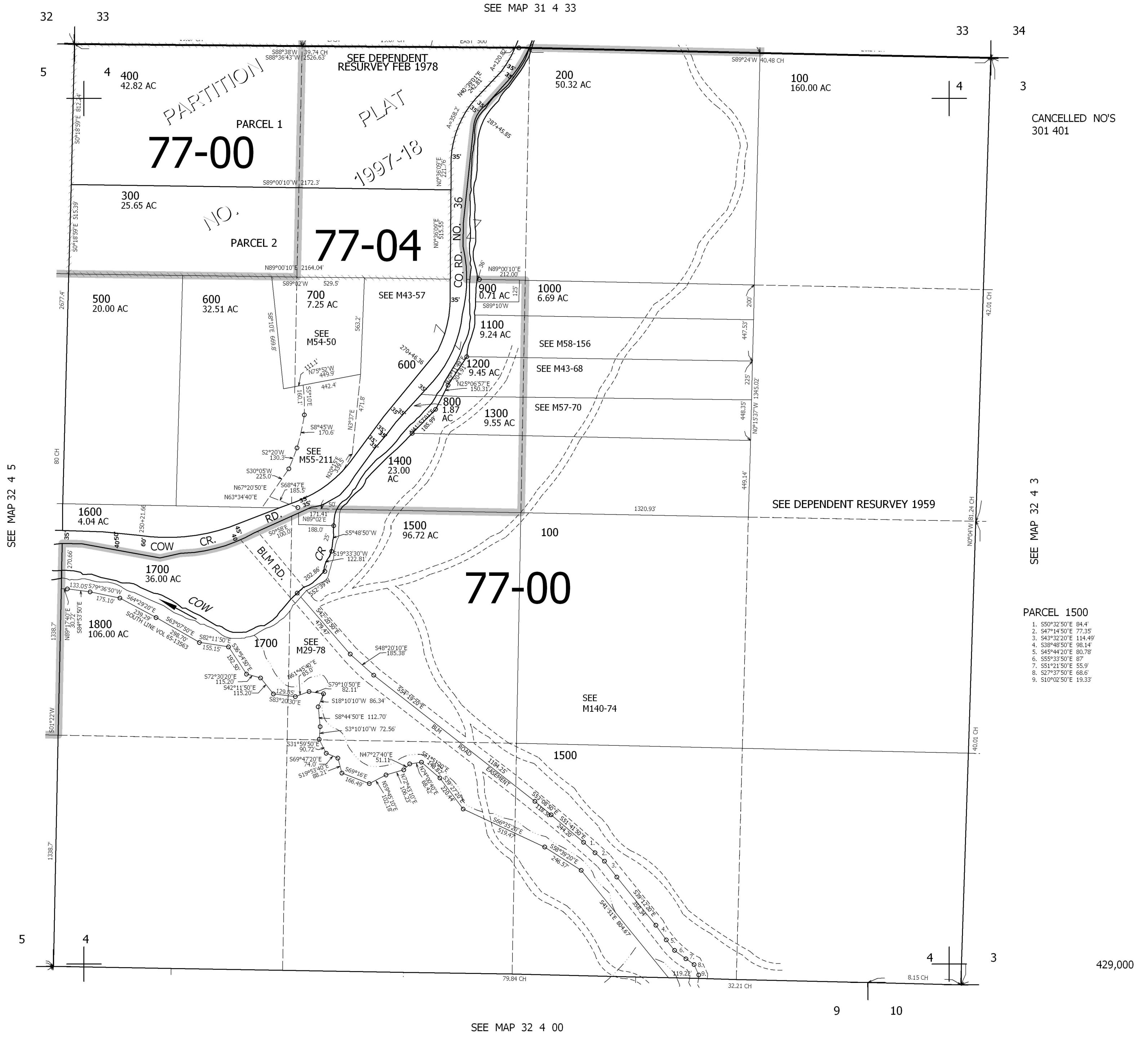


THIS MAP WAS PREPARED FOR ASSESSMENT PURPOSE ONLY.

SEC.4 T.32S. R.4W. W.M.
DOUGLAS COUNTY
1" = 400'

REVISED ON
2-12-97

32 4 4



SEE MAP 32 4 5

SEE MAP 31 4 33

CANCELLED NO'S
301 401

SEE MAP 32 4 3

- PARCEL 1500
1. S50°32'50"E 84.4'
 2. S47°14'50"E 77.35'
 3. S43°32'20"E 114.49'
 4. S38°48'50"E 98.14'
 5. S45°44'20"E 80.78'
 6. S55°33'50"E 87'
 7. S51°21'50"E 55.9'
 8. S27°37'50"E 68.6'
 9. S10°02'50"E 19.33'

SEE M140-74

SEE MAP 32 4 00

429,000

4,205,000

32 4 4