

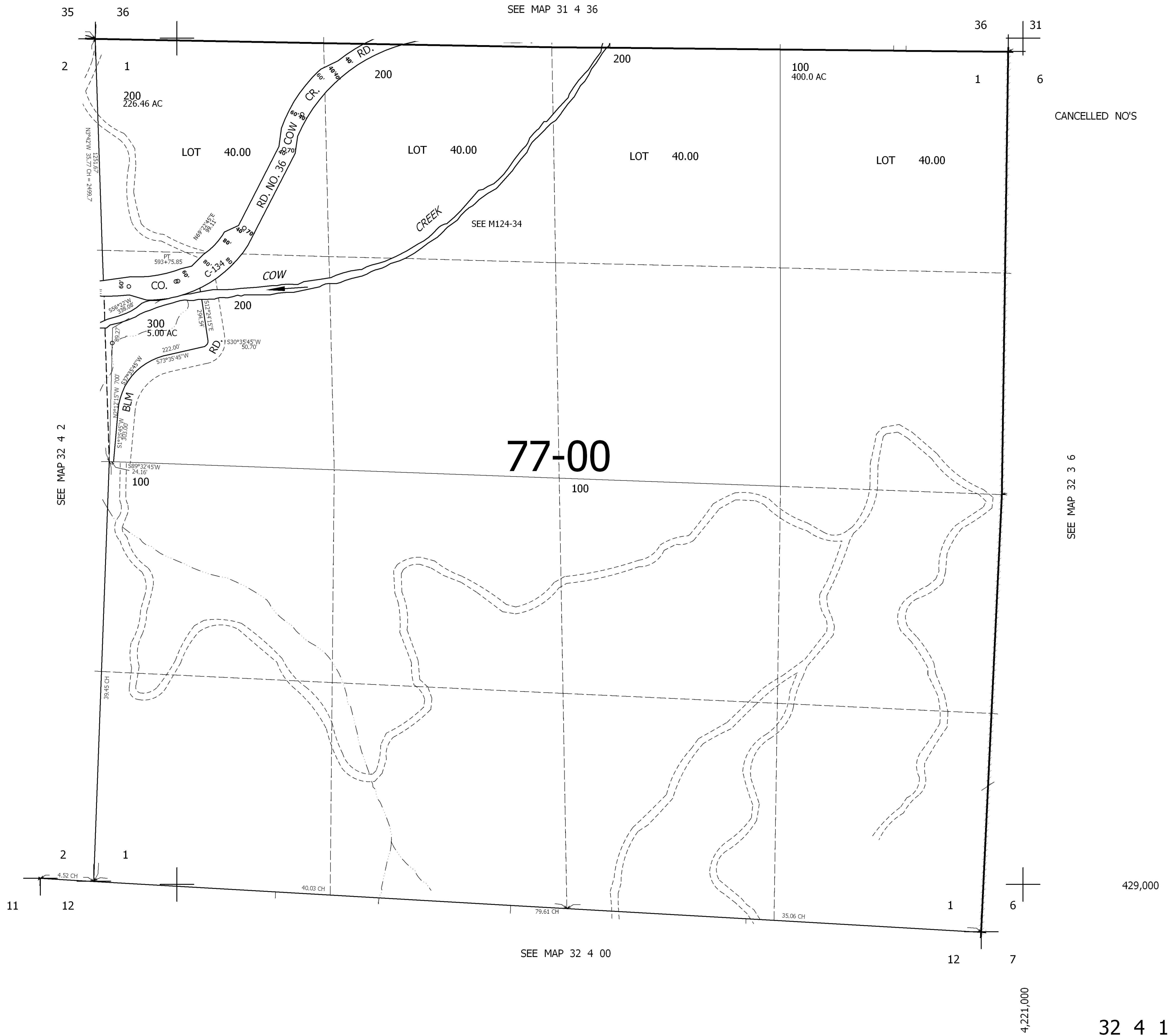
THIS MAP WAS PREPARED FOR
ASSESSMENT PURPOSE ONLY.

SEC.1 T.32S. R.4W. W.M.
DOUGLAS COUNTY

1" = 400'

REVISED ON

32 4 1



CANCELLED NO'S

SEE MAP 32 3 6

429,000

32 4 1

4,221,000