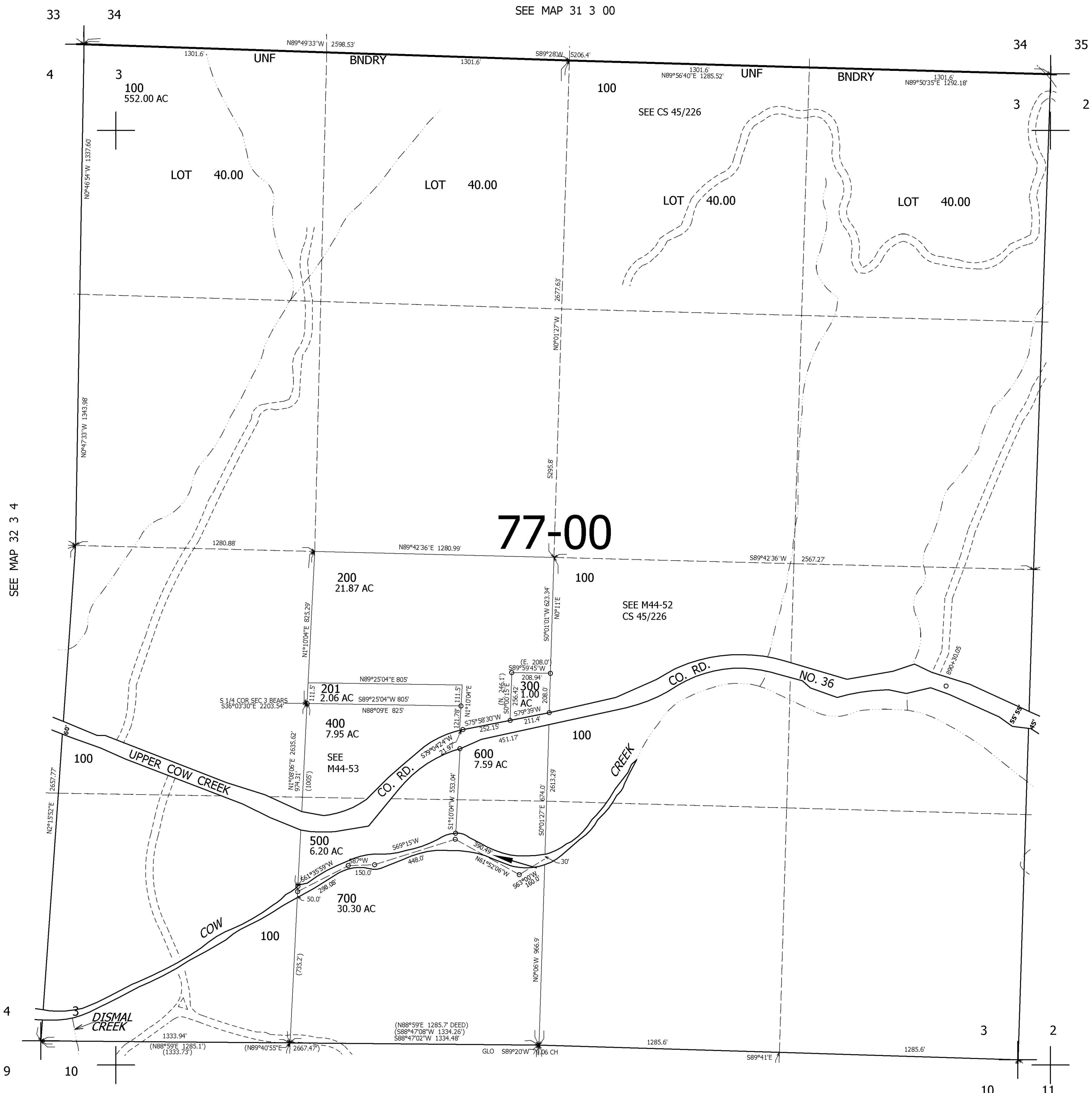


THIS MAP WAS PREPARED FOR ASSESSMENT PURPOSE ONLY.

SEC.3 T.32S. R.3W. W.M. DOUGLAS COUNTY
1" = 400'

REVISED ON 6-7-10

32 3 3



SEE MAP 32 3 4

SEE MAP 32 3 2

SEE MAP 32 3 10

CANCELLED NO'S

428,000

4,242,000

32 3 3