

THIS MAP WAS PREPARED FOR ASSESSMENT PURPOSE ONLY.

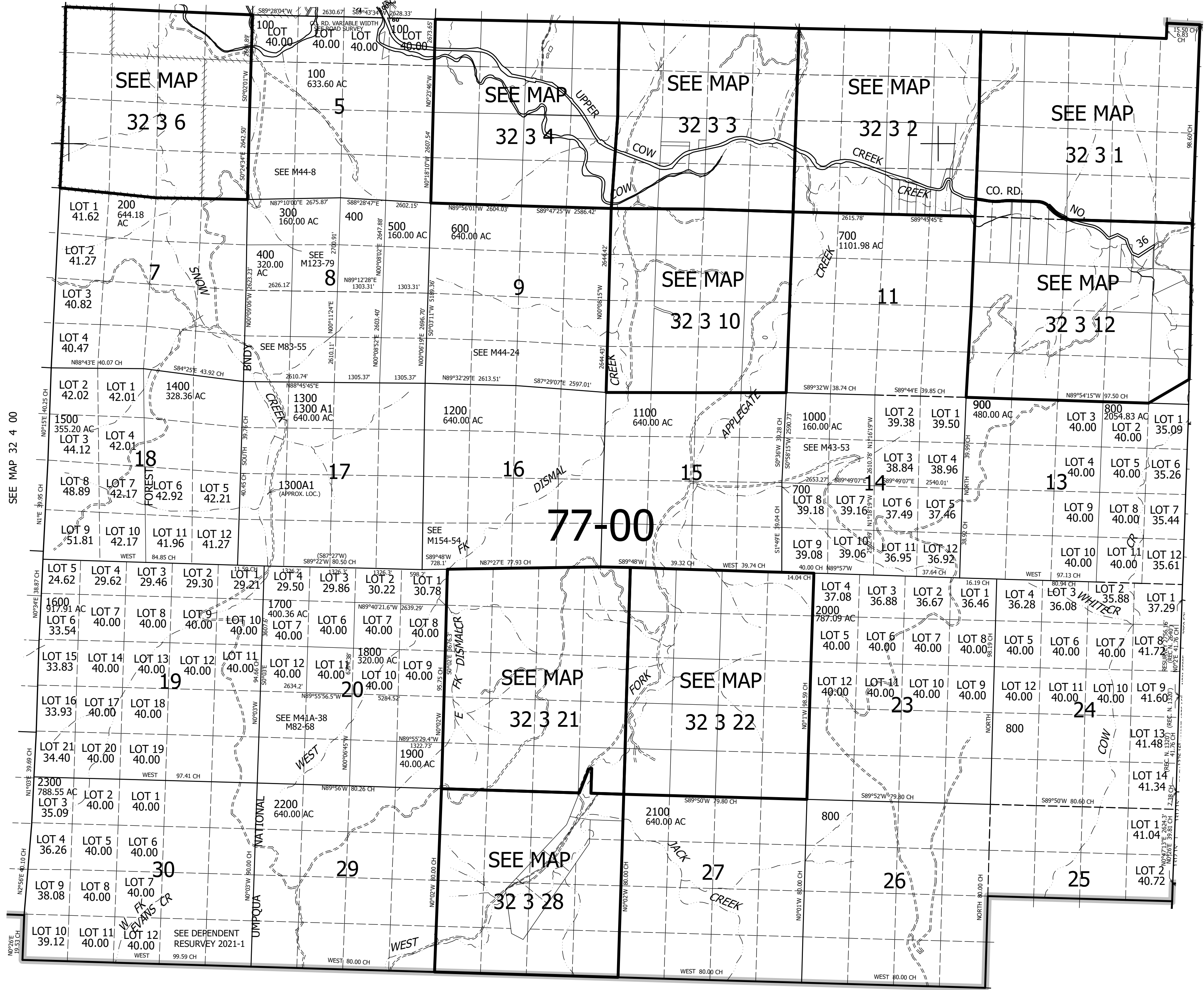
T.32S. R.3W. W.M. DOUGLAS COUNTY 1" = 2000'

REVISED ON 10-6-10

32 3 00 & INDEX

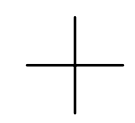
CANCELLED NO'S 300M1 500M1 1000M1 1200M1 1800M1

SEE MAP 31 3 00



SEE MAP 32 4 00

SEE MAP 32 2 00



JACKSON COUNTY

4,246,000

405,000 32 3 00 & INDEX