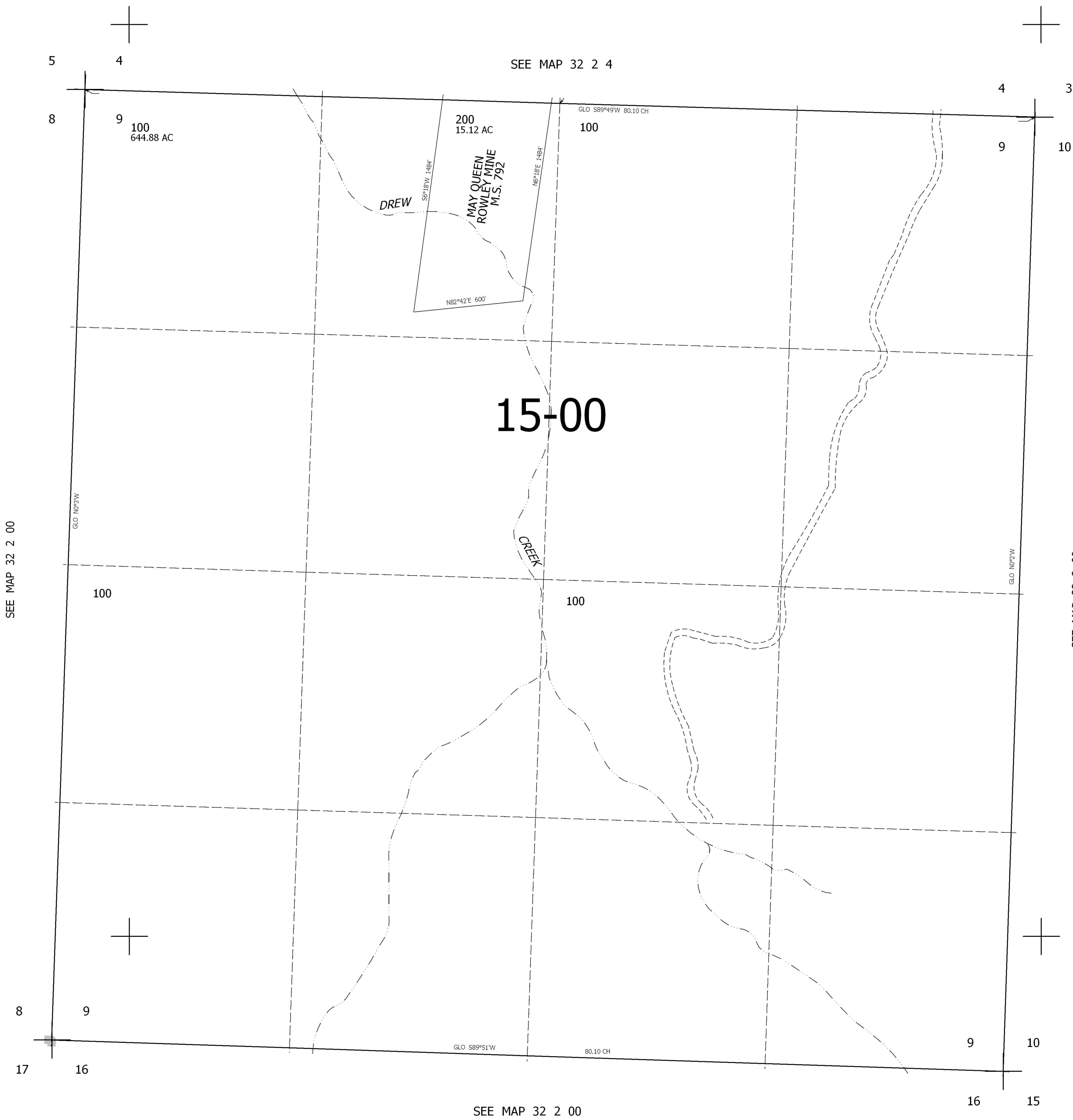


THIS MAP WAS PREPARED FOR ASSESSMENT PURPOSE ONLY.

SEC.9 T.32S. R.2W. W.M.
DOUGLAS COUNTY
1" = 400'

REVISED ON

32 2 9



CANCELLED NO'S

SEE MAP 32 2 00

SEE MAP 32 2 00

SEE MAP 32 2 00

422,000

4,269,000

32 2 9