

THIS MAP WAS PREPARED FOR ASSESSMENT PURPOSE ONLY.

SEE MAP 31 2 00

32

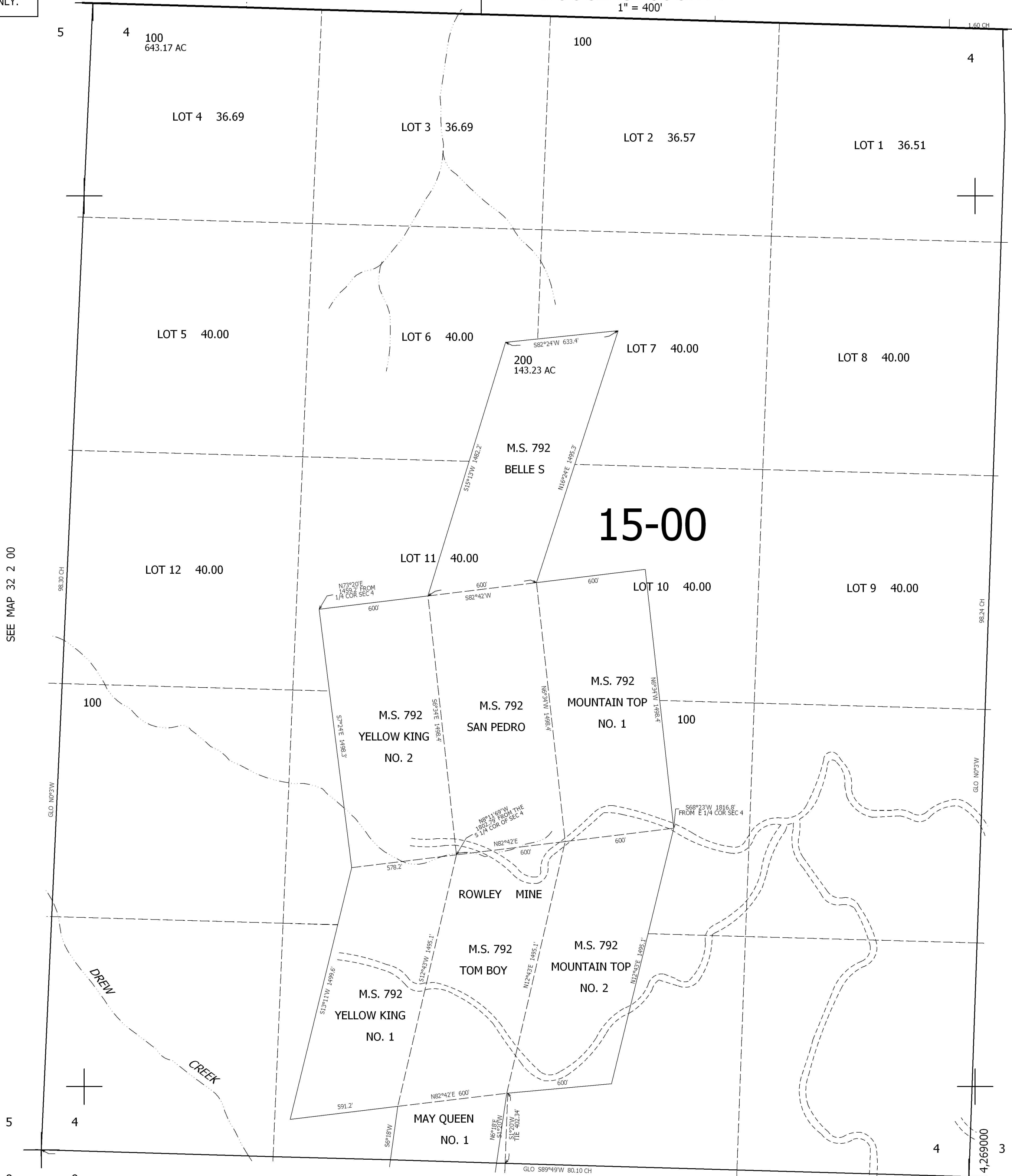
33

SEC.4 T.32S. R.2W. W.M. DOUGLAS COUNTY

REVISED ON

32 2 4

1" = 400'



CANCELLED NO'S

SEE MAP 32 2 00

SEE MAP 32 2 00

427,000

SEE MAP 32 2 9

32 2 4

4,269,000