

THIS MAP WAS PREPARED FOR ASSESSMENT PURPOSE ONLY.

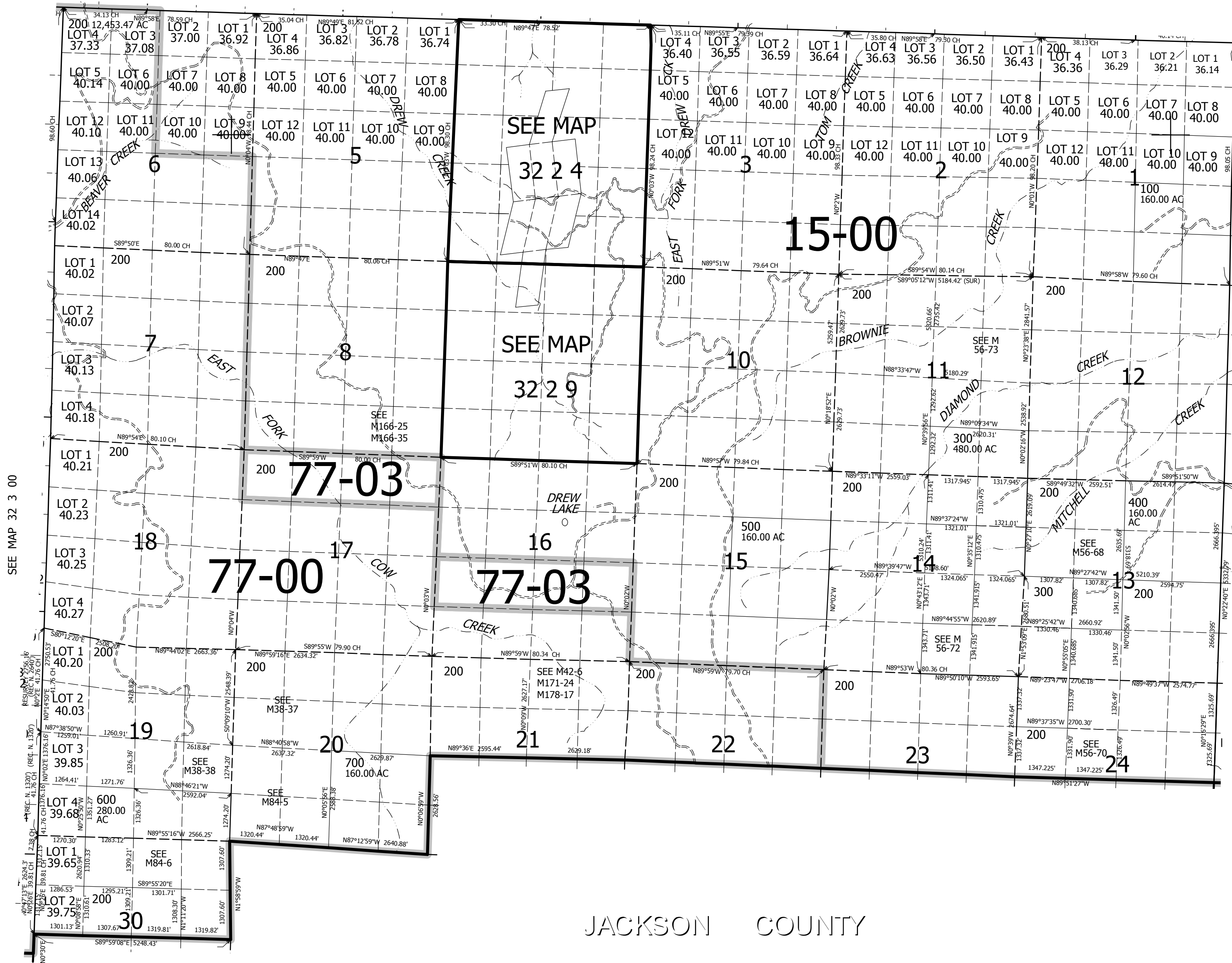
T.32S. R.2W. W.M. DOUGLAS COUNTY

1" = 2000'

REVISED ON 10-13-10

32 2 00 & INDEX

SEE MAP 31 2 00



CANCELLED NO'S

SEE MAP 32 1 00

SEE MAP 32 3 00

JACKSON COUNTY

405,000

4,283,000

32 2 00 & INDEX