

THIS MAP WAS PREPARED FOR ASSESSMENT PURPOSE ONLY.

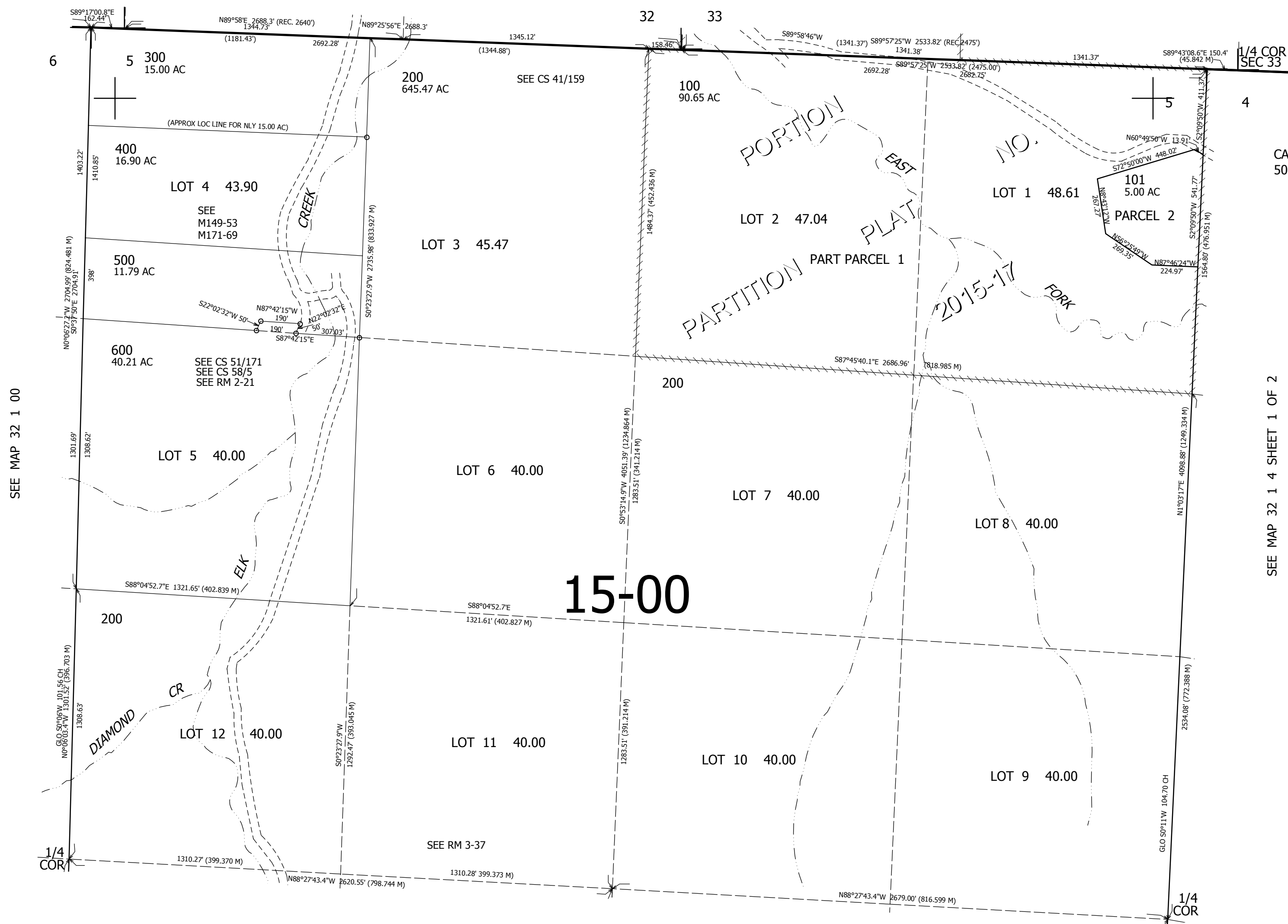
SEC. 5 T.32S. R.1W. W.M. DOUGLAS COUNTY

REVISED ON 8-17-15

1" = 400'

SEE MAP 31 1 32

SEE MAP 31 1 33

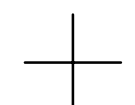
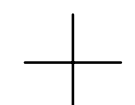


CANCELLED NO'S 501

SEE MAP 32 1 00

SEE MAP 32 1 4 SHEET 1 OF 2

SEE MAP 32 1 5 SHEET 2 OF 2



427,000

4,295,000