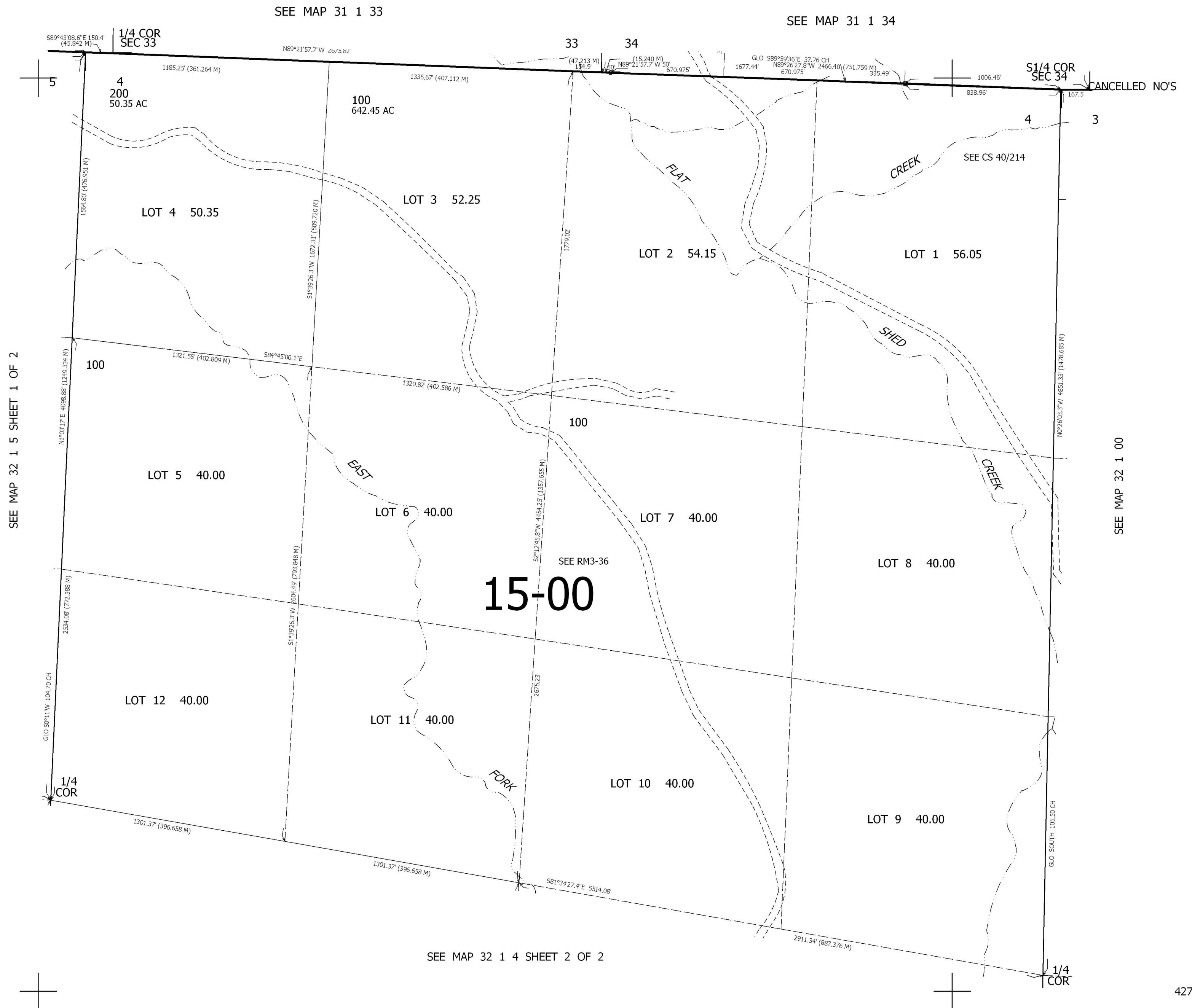


THIS MAP WAS PREPARED FOR ASSESSMENT PURPOSE ONLY.

SEC. 4 T.32S. R.1W. W.M.
DOUGLAS COUNTY
1" = 400'

REVISED ON



SEE MAP 32 1 00

427,000

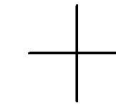
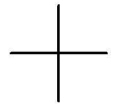
4,300,000

THIS MAP WAS PREPARED FOR ASSESSMENT PURPOSE ONLY.

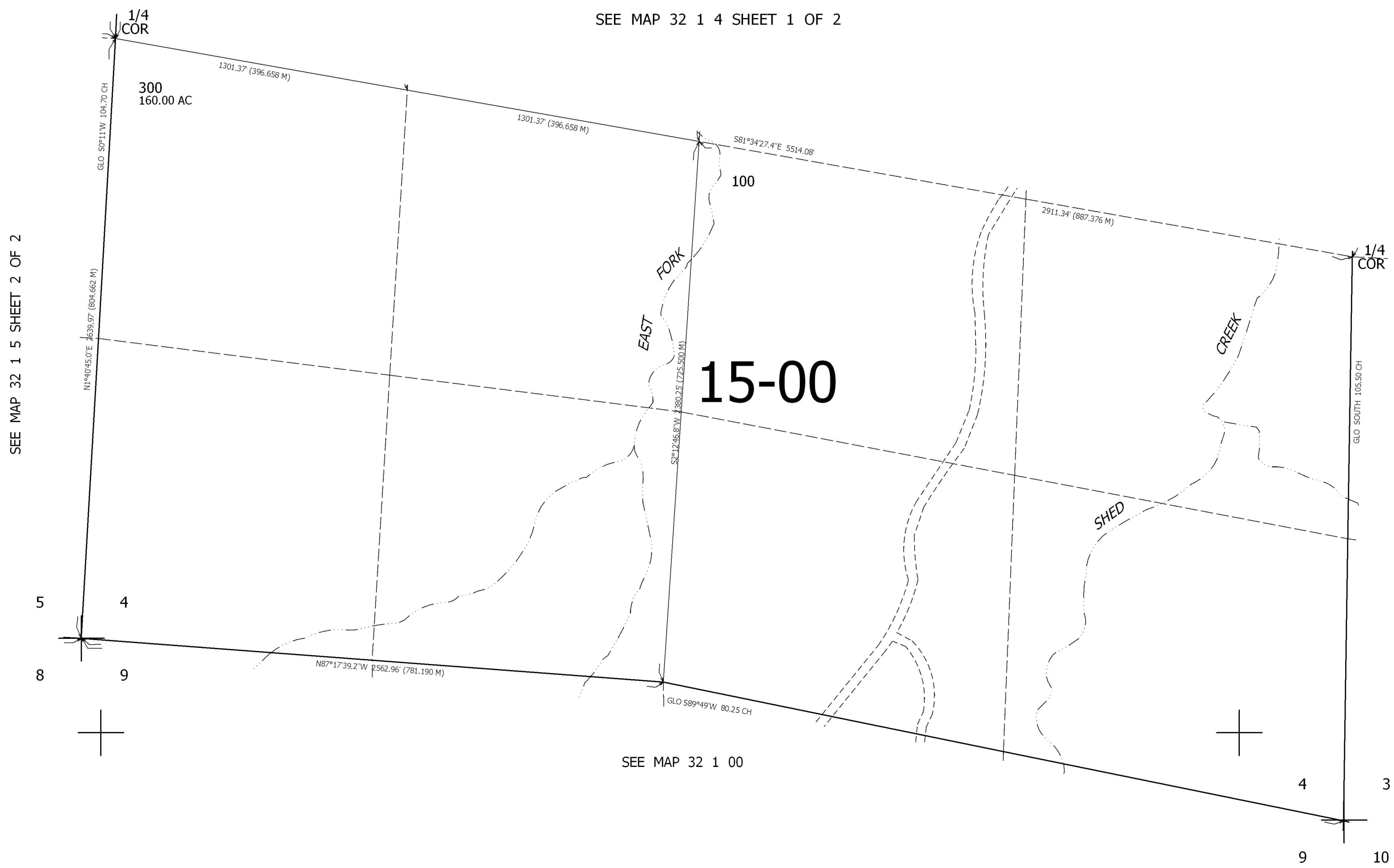
SEC. 4 T.32S. R.1W. W.M.
DOUGLAS COUNTY
1" = 400'

REVISED ON

32 1 4
(2 OF 2)



CANCELLED NO'S



SEE MAP 32 1 00

32 1 4
(2 OF 2)