

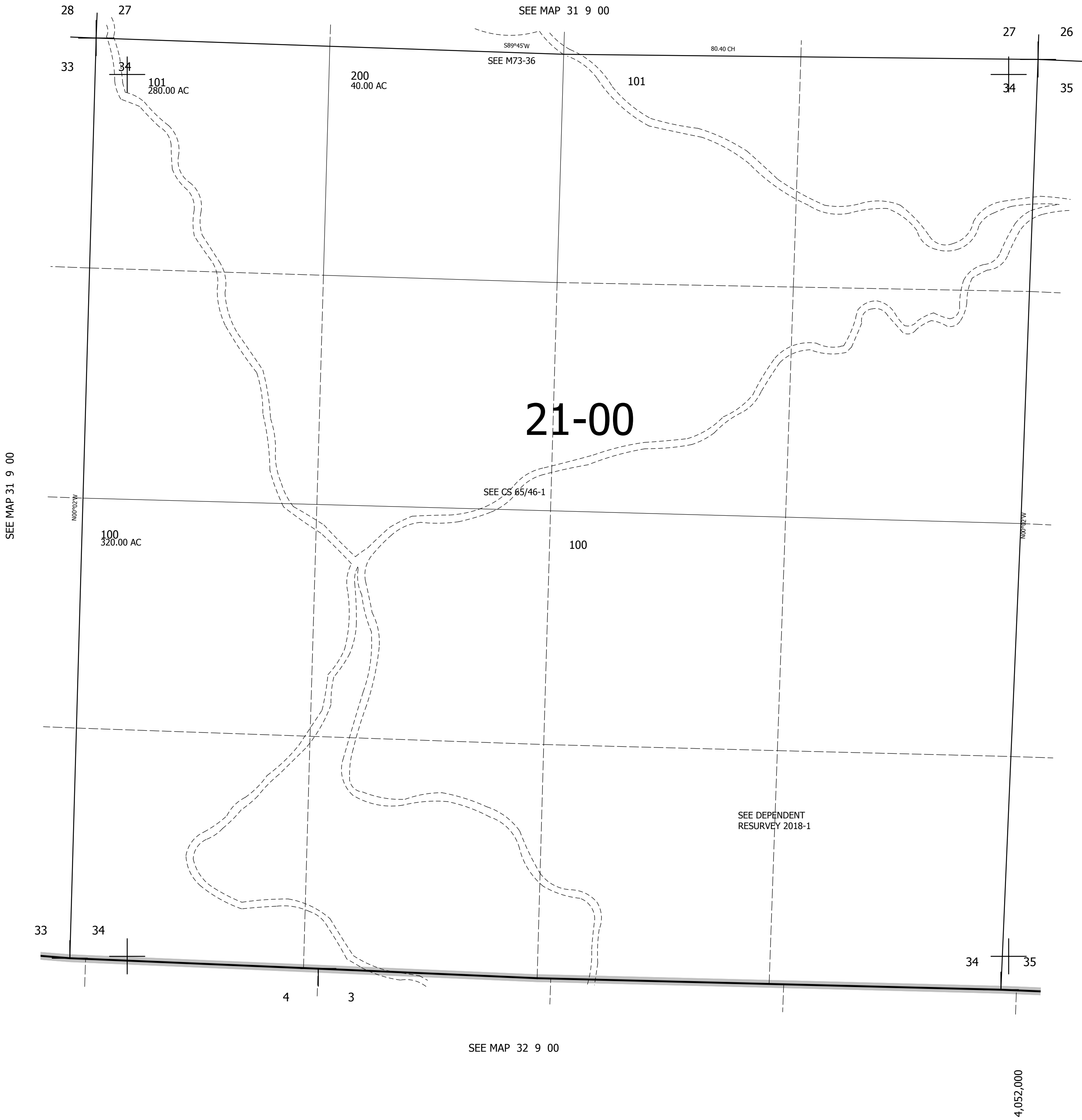
THIS MAP WAS PREPARED FOR ASSESSMENT PURPOSE ONLY.

SEC.34 T31S. R.9W. W.M.
DOUGLAS COUNTY

REVISED ON

31 9 34

1" = 400'



CANCELLED
100M1 101M1

SEE MAP 31 9 00

SEE MAP 31 9 00

SEE MAP 32 9 00

439,000

4,052,000

31 9 34