

THIS MAP WAS PREPARED FOR ASSESSMENT PURPOSE ONLY.

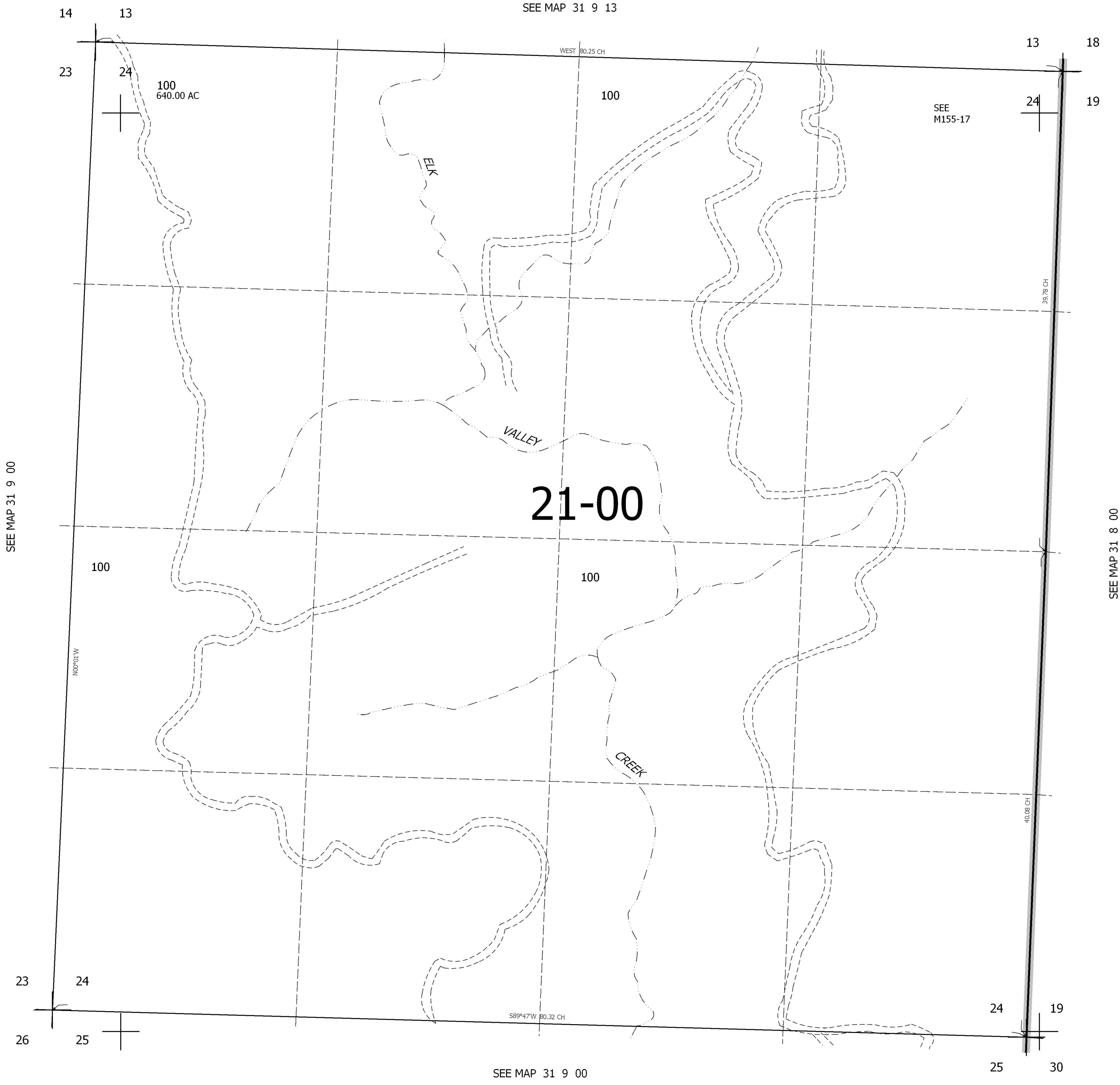
SEC.24 T31S. R.9W. W.M.
DOUGLAS COUNTY

REVISED ON

31 9 24

1" = 400'

CANCELLED
100M1



SEE MAP 31 9 00

SEE MAP 31 9 13

SEE MAP 31 8 00

SEE MAP 31 9 00

449,000

4,063,000

31 9 24