

THIS MAP WAS PREPARED FOR
ASSESSMENT PURPOSE ONLY.

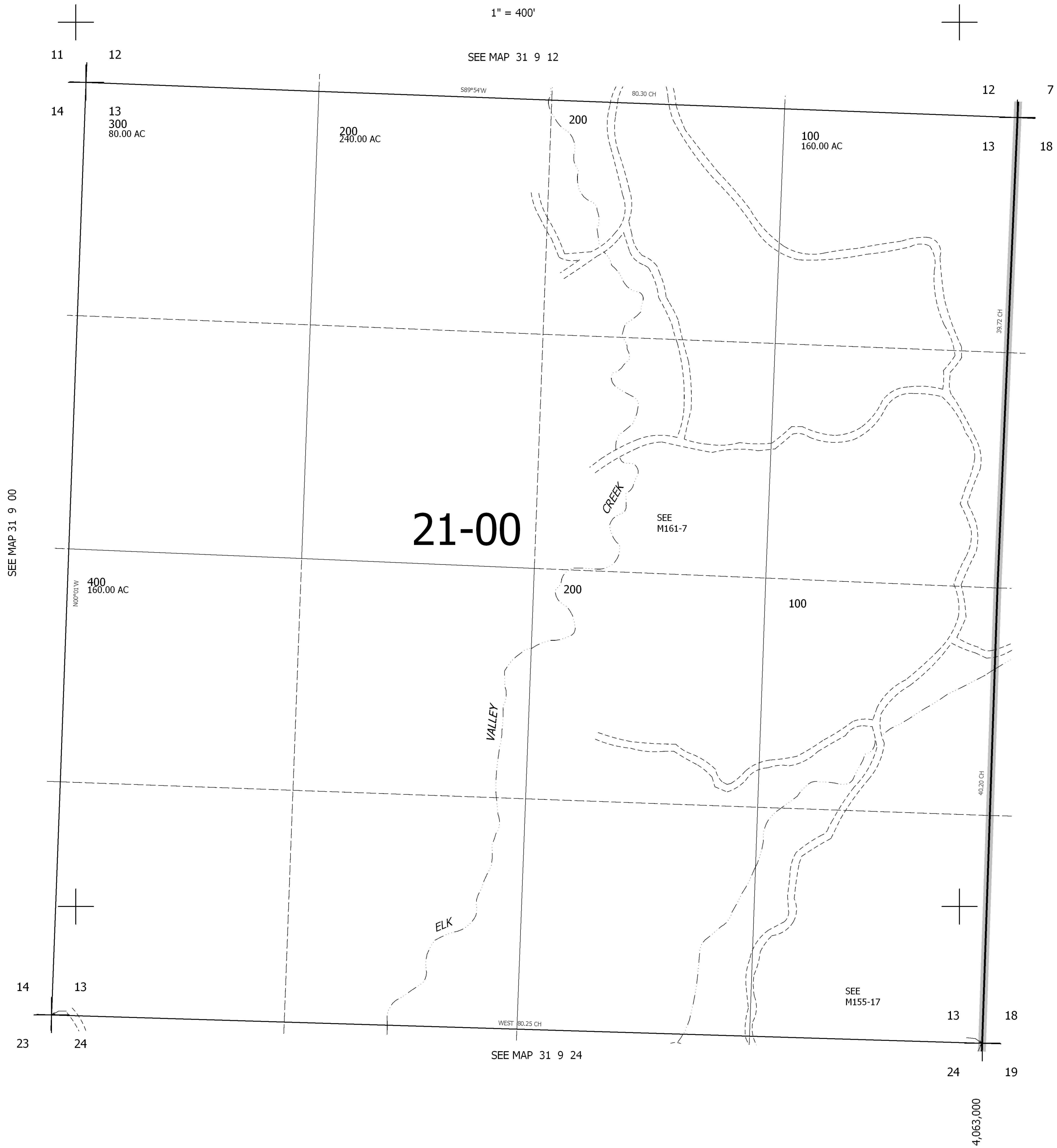
SEC.13 T31S. R.9W. W.M.
DOUGLAS COUNTY

REVISED ON

31 9 13

1" = 400'

CANCELLED
200M1 400M1



SEE MAP 31 9 00

SEE MAP 31 8 00

21-00

SEE
M161-7

SEE
M155-17

SEE MAP 31 9 24

4,063,000

455,000

31 9 13