

THIS MAP WAS PREPARED FOR ASSESSMENT PURPOSE ONLY.

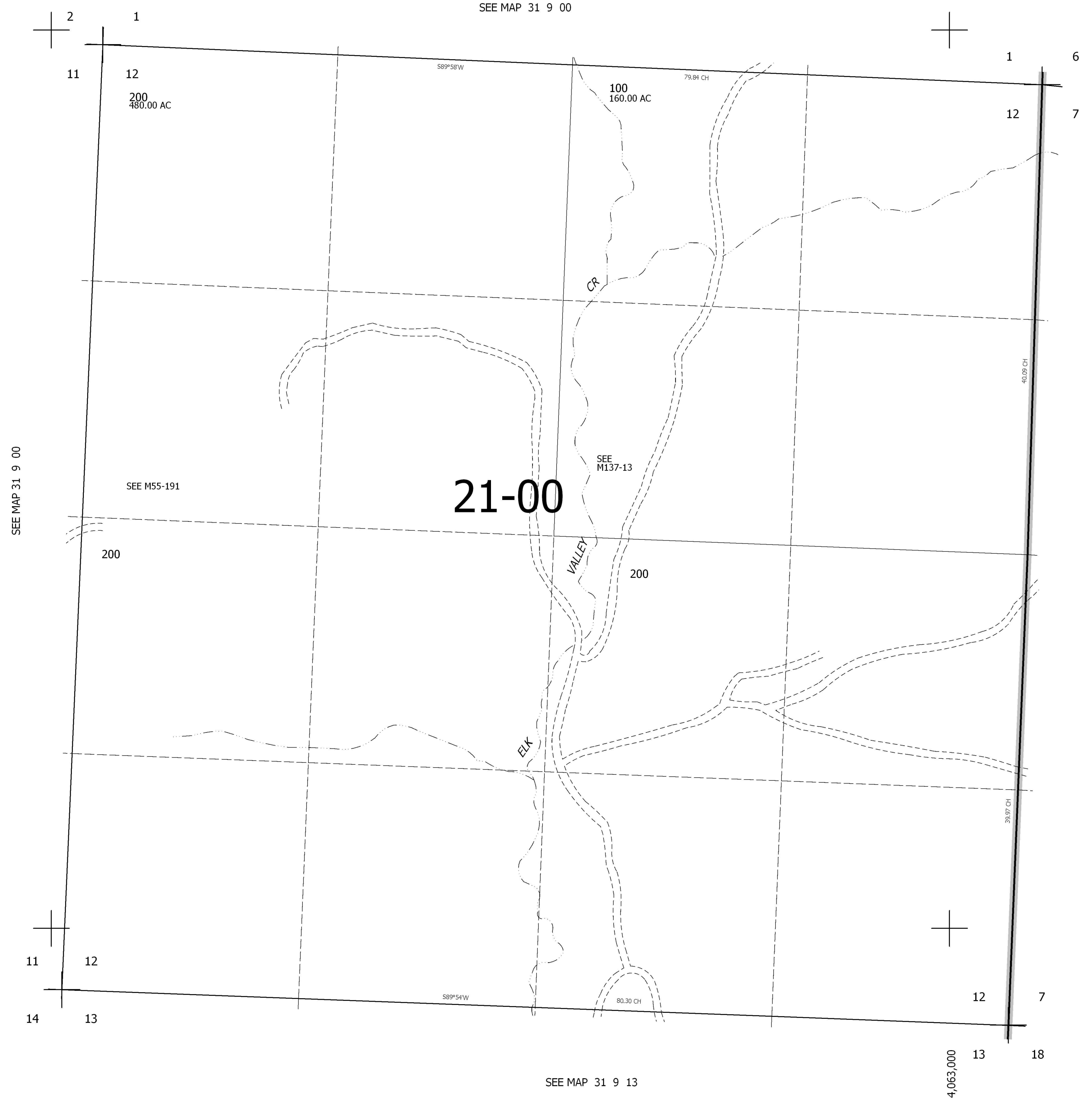
SEC.12 T31S. R.9W. W.M.
DOUGLAS COUNTY

REVISED ON

31 9 12

1" = 400'

SEE MAP 31 9 00



CANCELLED
200M1

SEE MAP 31 8 00

460,000

SEE MAP 31 9 13

4,063,000

31 9 12