

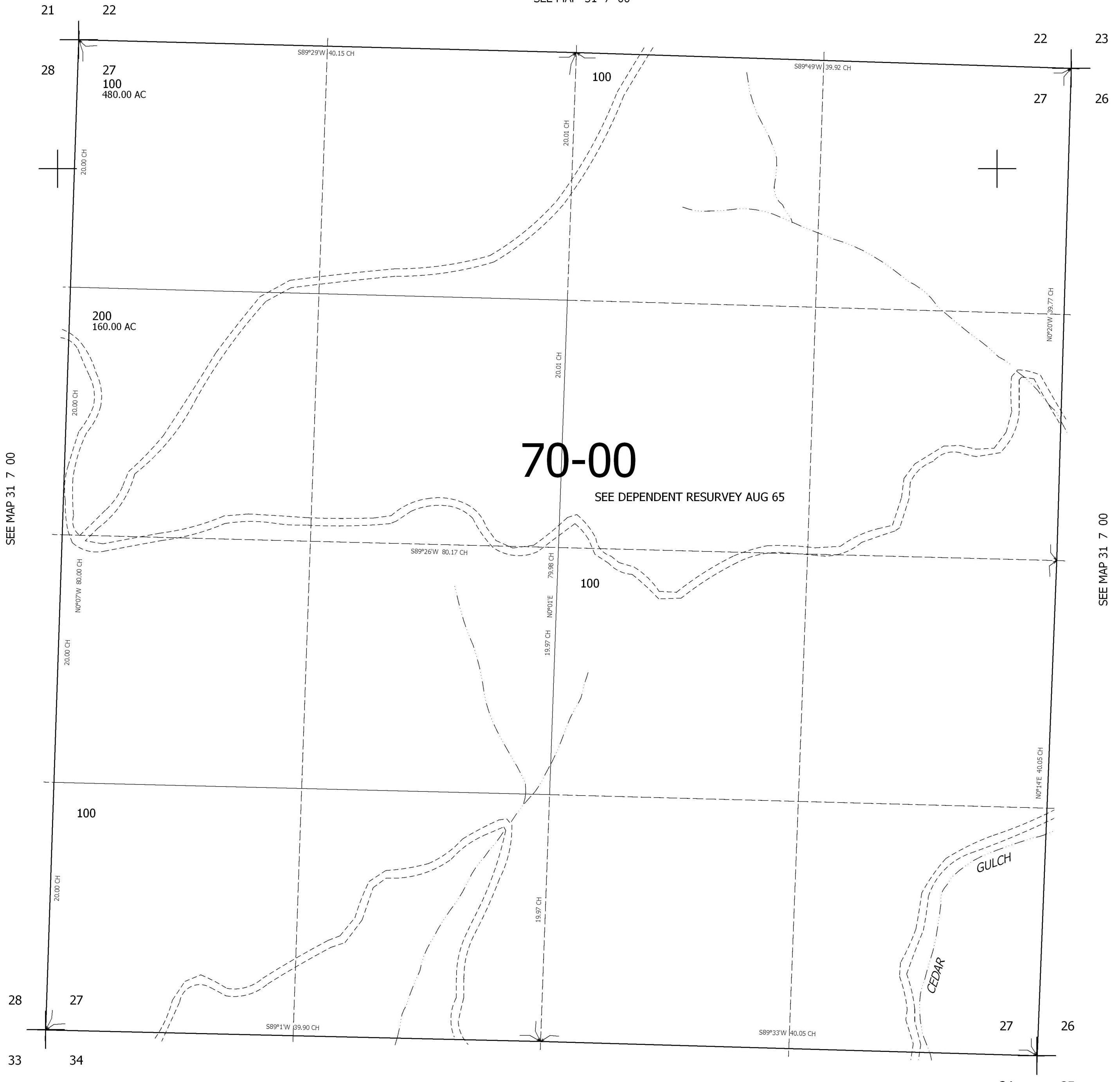
THIS MAP WAS PREPARED FOR ASSESSMENT PURPOSE ONLY.

SEC.27 T31S. R.7W. W.M. DOUGLAS COUNTY

REVISED ON

1" = 400'

SEE MAP 31 7 00



CANCELLED

SEE MAP 31 7 00

SEE MAP 31 7 00

70-00

SEE DEPENDENT RESURVEY AUG 65

SEE MAP 31 7 00

4,115,000