

THIS MAP WAS PREPARED FOR ASSESSMENT PURPOSE ONLY.

SEC.9 T31S. R.7W. W.M. DOUGLAS COUNTY

REVISED ON
7-8-19

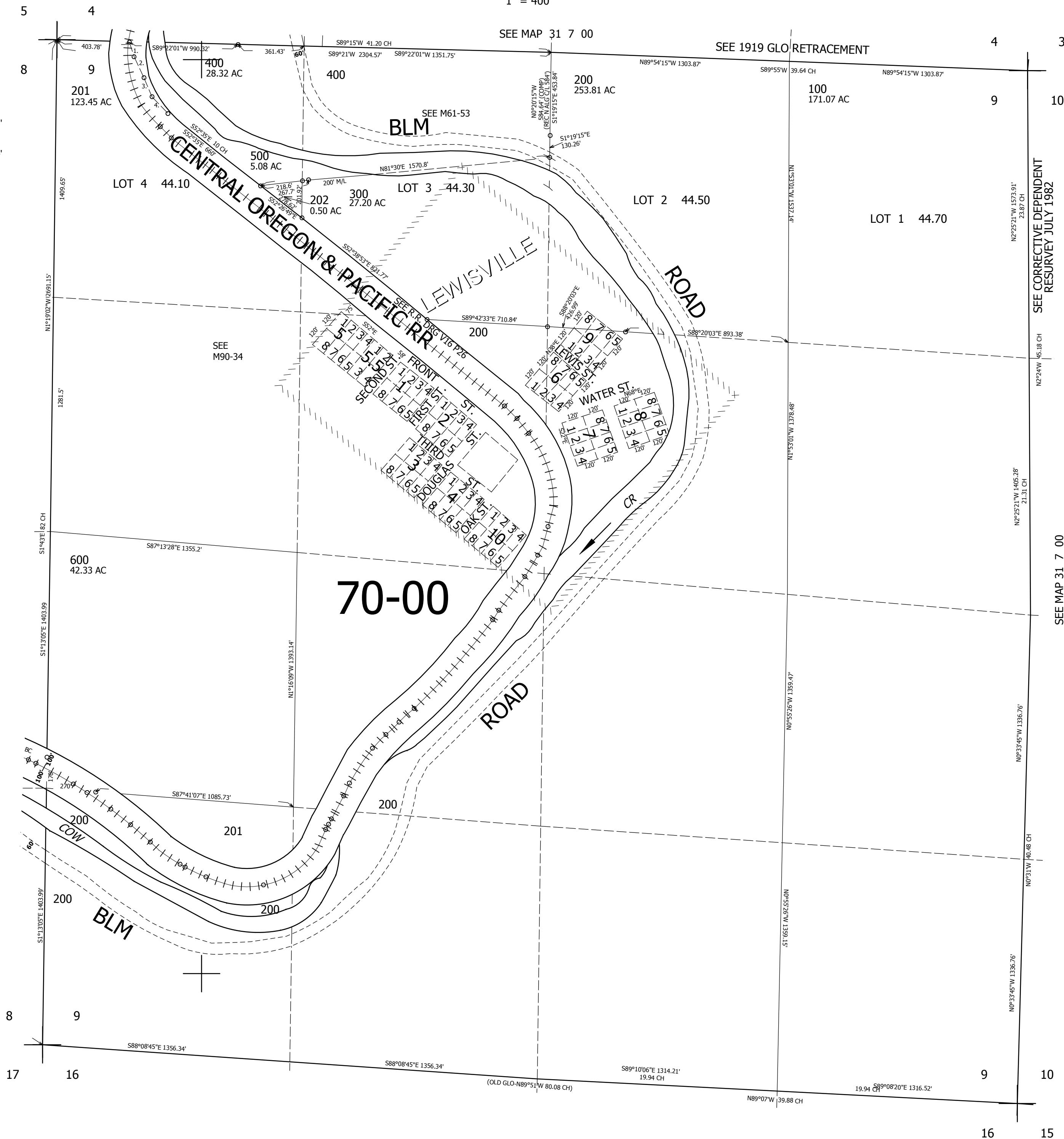
31 7 9

1" = 400'

PARCEL 500

1. S14°36'E 1.22 CH = 80.52'
2. S28°E 2.00 CH = 132'
3. S27°E 1.82 CH = 120.12'
4. S45°30'E 1.90 CH = 125.4'

SEE MAP 31 7 8



CANCELLED NO'S

SEE CORRECTIVE DEPENDENT RESURVEY JULY 1982

SEE MAP 31 7 00

459,000

SEE MAP 31 7 00

4,111,000
31 7 9