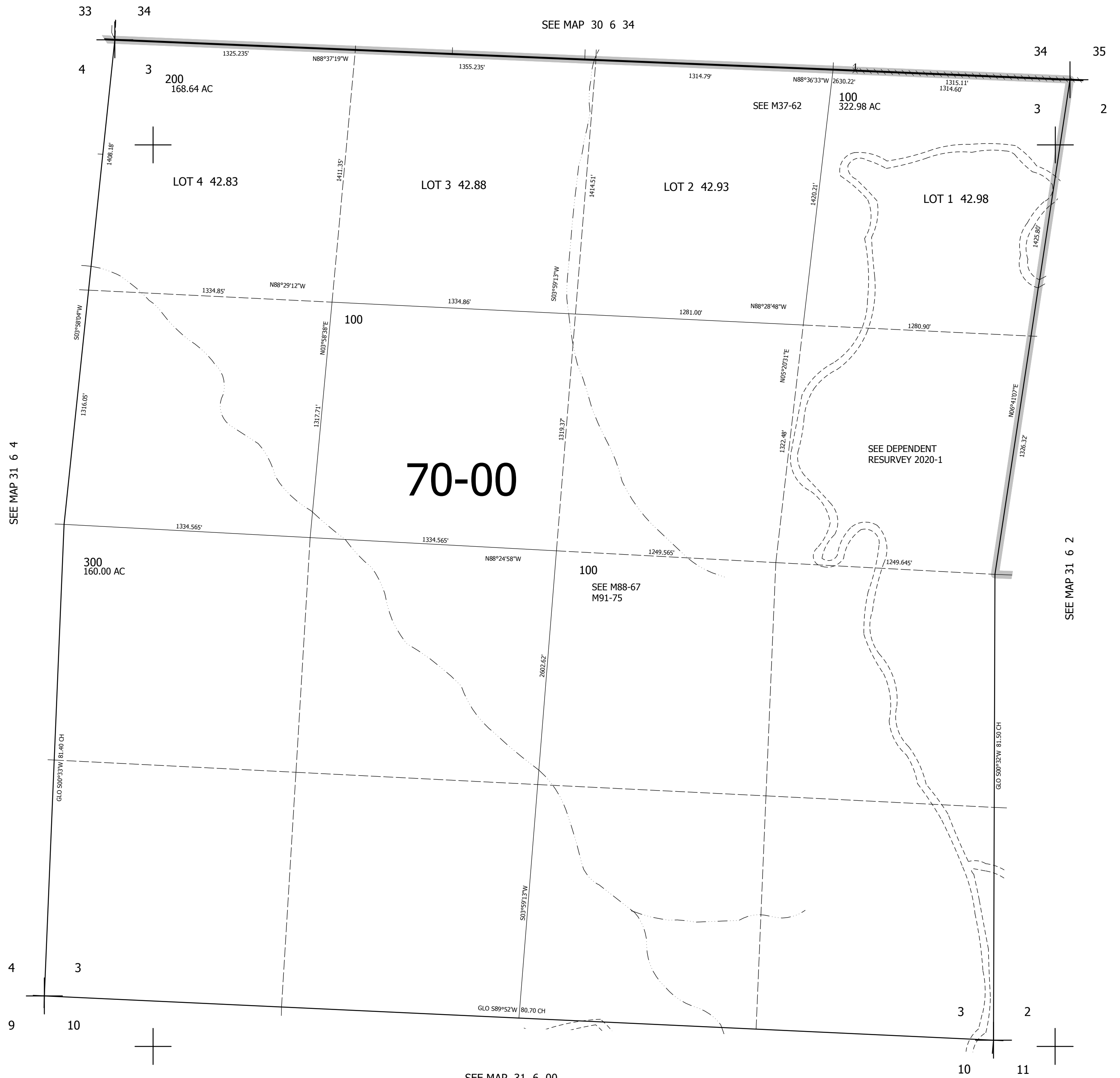


THIS MAP WAS PREPARED FOR ASSESSMENT PURPOSE ONLY.

SEC.3 T31S. R.6W. W.M.  
DOUGLAS COUNTY

REVISED ON

1" = 400'



CANCELLED  
300M1

70-00

200  
168.64 AC

100  
322.98 AC

300  
160.00 AC

100  
SEE M88-67  
M91-75

SEE MAP 31 6 00

SEE MAP 31 6 4

SEE MAP 31 6 2

462,000

4,148,000